

LISTENING POST

ISSUE NUMBER FORTY-FOUR

JANUARY 1993

Memphis **P**re-Convention Conferences

This year's Convention will feature three pre-convention conferences for the special interest groups of business, education, and research. The conferences will be held on Wednesday, March 3, at the Adam's Mark hotel, and they will provide a more intensive block of sessions for the special interest groups, as well as for local attendees. The sessions will not be available during the regular convention, and the schedule is as follows:

Business Conference

8:00 a.m. - 4:15 p.m.

Listening as Empowerment
in Business

(\$80 ILA members/
\$100 non-members)

Research Conference

12:00 p.m. - 6:00 p.m.

Planning and doing Multi-
Campus, Programmed
Research (\$10/\$20)

Education Conference

3:30 p.m. - 8:30 p.m.

Teaching Effective Listening
Can Empower Success
(\$15/\$25)

The business conference features top-notch consultants and will have sessions on mediation, culture and gender roles in listening, process communication, and listening styles, and special guest speakers from Federal Express on the role of listening in developing leadership at Federal Express. The fee

includes a continental breakfast, lunch, and breaks.

The research conference will provide specialized sessions by veteran listening researchers on conducting research in areas such as listening competence, listening and gender, and multi-campus research. The fee includes breaks.

The education conference is a hands-on workshop for Memphis area teachers and ILA members to get information, ideas, and activities to enhance students' listening skills and teachers' effectiveness and promises to be a fast-paced, action-oriented session with seasoned listening teachers. The fee includes breaks and a light dinner.

Listening Post On the Move...Again

Take out your address books, members' directory, or anything else that contains addresses and phone numbers, the *Listening Post* is moving again. I have taken a teaching position with the University of North Alabama, and so the *Post* and I are moving to Alabama. Please continue to send your news, articles, etc., but send them to the following address:

Lisa Vickers, Editor
Listening Post
Dept. of Comm. & Theatre
Box 5189
Florence, AL 35632

Should you need to call, my new number will be (205)760-4596. Thank you for your contributions to the *Post*, and for your support and understanding as I make this move.

1996, 1997 Site Selections in Progress

The site selection committee is interested in members who would like to serve as host of the 1996 or 1997 conventions. You must be willing to work with the hotel and the First Vice President in planning the convention. We are interested in sites in the sun belt or major metropolitan areas where our members are located. You will be given help and guidance by association members who have hosted before. It would help if you had access to high school, college, or university students and a campus which would provide media equipment. If you are interested please write:

William E. Arnold, Chair
Site Selection Committee
Dept. of Communication
Arizona State University
Tempe, AZ 85258-1205

President's Perspective

Why do people join professional organizations? How do you make choices among your various professional activities? In an economy that has had an impact in some way on every one of us, how do we make decisions about whether to buy that new printer or go to an association convention?

There are a number of reasons why you might choose to put your time and money into a professional association. Perhaps one of the most common incentives is simple networking. As friendly and as interesting and as helpful as your co-workers might be, it's nice to see a new face, find out what's going on outside of your own community, vent your problems and discuss your concerns with someone who might have a new perspective. After several years, these new faces are likely to become familiar; soon, many of these familiar people also become cherished friends. For many of us, ILA has been a catalyst extraordinarily strong and lasting friendships.

Another reason why association membership may be a priority is for information—to stay current in a particular field, to explore new teaching and training methods, to become more familiar with available resources. The annual ILA convention fulfills this requirement for the vast majority of its members. Association conventions, however, must be good enough to compete with other options when times are tough. Programs must be so interesting, so innovative, and so thought-provoking that those who attend feel that they have participated in an event that has made a significant difference in their professional lives. The *ILA Listening Post* and *Journal* also serve as vehicles for sharing new ideas and reporting research results. Special projects, such as listening bibliographies and resource displays, further contribute to developing member expertise.

Associations are also forces in shaping the attitudes, opinions, and some-



times even the behaviors of non-members. An association's credibility and relationships with other organizations and institutions enable it to affect not only public opinion but legislation and programming as well. Policy makers at all levels can be influenced by an association's advocacy efforts. Symbolically, an association communicates far more effectively and powerfully than individuals working alone.

Professional associations are, without question, extremely important organizations. They not only advance their discipline by educating members and by stimulating professional activity, but they are also the voice of the field as it speaks to the media, to government, and to members of related groups. What does it take to keep a voluntary professional association healthy and productive, particularly in times of economic difficulties and competing interests?

Today, keeping such a professional association strong requires an involved and committed membership. The ILA is no exception. Your association needs active participation by all of its members. Each person may contribute in a different way, but the whole is only as strong as the sum of its parts. It is only through your personal involvement that both you and your fellow ILAers will be

enriched, and it is only through your efforts that this organization can continue to accomplish its objectives. What can you do? You can:

- talk about the importance of listening and about ILA with your colleagues and clients—share a brochure, do a guest lecture on listening, introduce seminars for your community and its businesses
- encourage your students to become involved in ILA
- submit information to the *Listening Post*
- consider focusing your research on some aspect of listening
- send your research to the *ILA Journal*
- respond to important requests—submit names to the Nominations and Awards Committees, take an active role in the organization's future direction
- join a committee or interest group (contact Michael Gilbert or Sheila Bentley)
- talk with ILA officers about your ideas, ask questions and offer suggestions that you think will help ILA better serve its current members and attract new ones
- attend (better yet, participate in) the annual convention
- attend (or initiate) a regional ILA activity
- offer to help out on a special ILA project

And there are many, many more ways to demonstrate that you care about listening. It's a new year. We need to look ahead, to recognize that organizations are in constant transition as they respond to and anticipate changing needs. Your ILA officers are ready to listen. We seek new ideas—your ideas—and solicit your participation in shaping the direction of listening in the 1990's. See you in Memphis!

New

Members

Richelle Colley
6505 Seaport Ave.
Tampa, FL 33637
Home: 813-989-1709

Linda S. Larson
Faculty-Speech Communication
Mesa Community College
1833 W. Southern Ave.
Mesa, AZ 85202-7572
Work: 602-461-7520
Home: 602-838-9470

Changes

Harvey Weiss
8617 Edenbrook Crossing
Brooklyn Park, MN 55443

Lisa Vickers
1540 Helton Dr. #508
Florence, AL 35630
Work: 205-760-4596
Home: 205-764-2275

Boston Friends Needed

Roll through your Rolodex or card file and pull out a couple of names of professional colleagues who live in the Greater Boston area. Mail (Greg Enos, Work Systems, 313 Boston Post Road West, Marlboro, MA 01752), FAX (508-485-0737), or phone (1-800-777-4972) this information to Greg Enos so he can begin to involve them in the 1994 Conference. These "inside contacts" will be especially helpful in targeting the college/university crowd that has not been involved in ILA.

(The Lafayette Hotel, located in the center of the historic hub, will be the site for the 1994 Conference.)

NOTICE

If you do not receive your conference information by the end of January, contact Mary Wise, ILA Executive Director.

Announcements

ILA Starting Newsletter Swap

The ILA would like to begin exchanging newsletters with (or at least sending our *Listening Post* to) organizations whose interests are closely related to our interests. This may range from business to health care, from education groups to hobby groups. If you know of an organization that you would like us to reach out to, send its name and a mailing address to Mary Wise, ILA Executive Director, CICS, BSU, Muncie, IN 47306.

INTEREST GROUP #1

Name: Environmental & Architectural Phenomenology

Source: Their Newsletter editor contacted ILA for exchange

Purpose: "Environmental and Architectural Phenomenology, published three times a year, is a forum and clearing house for research and design that incorporate a qualitative approach to environmental and architectural experience. One key concern of EAP is design, education, and policy supporting and enhancing natural and built environments that are beautiful, alive, and humane. Realizing that a clear conceptual stance is integral to informed research and design, the editors of EAP include information on phenomenological approaches to the environment but also cover other styles of qualitative, descriptive research." (from the cover of *Environmental and Architectural Phenomenology*)

Reeva Miller Levine, Seattle Artist, Dead

Reeva Miller Levine, award-winning artist who contributed three original paintings to the 1992 ILA convention in Seattle, died Oct. 22 after a brief illness.

Reeva, who often painted while listening to music and whose life and work exemplified the qualities of a sensitive

and empathic listener, became very interested in the work of ILA. She offered to illustrate the theme of the convention, "Listening, a Mosaic," by means of three large panels in acrylic. They combined impressionistic swirls of pastel colors, interspersed with mosaics and with figures representing men and women from many different races and countries. Together they gave a mystic sense of both the diversity and the unity of all peoples.

The painting formed a striking focal point for the functions held in the ballroom of the Edgewater. They will eventually be displayed permanently in the new family center at Camp Brotherhood, an interfaith conference facility north of Seattle, that was founded by Reeva's husband, the late Rabbi Raphael Levine.

Toot Your Own Horn

Sometimes it's difficult to tell people how talented you are. So Public Relations Committee member Barbara Keith has been working on a brochure which will offer a few tasteful suggestions on how to "toot your own horn." Be certain to pick up a copy when you attend the Memphis convention.

The Public Relations Committee will be holding a one-time-only meeting during the convention. Anyone with new PR ideas is invited to attend. We are always looking for new members, so if you have never given the ILA some of your time and energy, this committee would be a great jump off spot...and we need all the creative minds we can get.

If each and every ILA member did all that could be done to publicize the ILA and the subject of listening in the immediate community in which you function, then the visibility that we are seeking could be achieved. What have you done lately to promote the study and development of effective listening skills for the people in your life?

A Gift You Can Use

Often we receive birthday or anniversary gifts that are impractical and thus we never use them. Not the case with *Experiential Listening: Tools for Teachers and Trainers*, the collection of activities and strategies edited by Carolyn Coakley & Andrew D. Wolvin and given to ILA as a tenth anniversary gift (all proceeds from the sales go to ILA).

The beauty of the gift is that:

- It has a very specific focus, that of three components of effective listening—knowledge, skills, and attitudes.
- The collection of activities and strategies are organized according to the components they reinforce.
- All the activities /strategies are written in the same format, making them easily accessible and usable.

The materials are ideas contributed by ILA members and friends.

- There is an enormous variety of teaching/training material in the collection.
- The ideas have been tried and found successful in teaching the three components of listening.
- The gift is a tremendous resource.
- And of course, the gift is from Carolyn and Andy.

Since receiving the gift four years ago, I have used it again and again to get "that one idea or activity" that would really bring the teaching session alive. Thank you Carolyn and Andy for a gift I can really use. (By the way, someone, ILA will be celebrating its fifteenth anniversary real soon, hint, hint.)

—Wayne Bond

The Making of *Experiential Listening: A Tool for Teachers and Trainers*

In conjunction with the ILA's 10th Anniversary, Carolyn Coakley and Andy Wolvin asked their ILA colleagues to share original listening activities. Forty original teaching/training exercises and activities were submitted. The bulk of the activities proved to be quite adaptable to secondary, collegiate, corporate, and even elementary school situations. Carolyn and Andy then compiled these activities and exercises into book form. Supported by a generous grant from the Aristech Foundation of Pittsburgh, Pennsylvania, their book, *Experiential Listening: A Tool for Teachers and Trainers*, was published in 1989. All ILA members who attended the 10th Anniversary convention received a free copy.

The revenue from the sale of the remaining 100 copies of that first printing was given to the ILA. Since that time, *Experiential Listening* has continued to generate revenue for the ILA. Carolyn and Andy have specified that a percentage of all future revenues from subsequent printings go to the ILA to further its mission. SPECTRA Incorporated Publishers, the publishers of the book, report that *Experiential Listening* is still selling well and, as a result of the thoughtfulness of Andy and Carolyn, benefiting the ILA.

Both Andy Wolvin and Carolyn Coakley have remained quite active in the listening field since the publication of *Experiential Listening*. Of special note is the completion of Carolyn's new book *Teaching Effective Listening: A Practical Guide for the High School Classroom* (to be published by SPECTRA Incorporated Publishers in early 1993).

Copies of *Experiential Listening* can be purchased (\$18.95 plus postage and handling) by calling (504-831-4440) or writing SPECTRA Incorporated Publish-

ers at P.O. Box 13591, New Orleans, LA 70185-3591.

Tape of Seattle Conference Available

An edited version of the Seattle conference, Elvis and all, is available for purchase with money going to the ILA. Anyone interested contact

Harvey Weiss
8617 Edenbrook Crossing
Brooklyn Park, MN 55443



ILA LISTENING POST

Listening Post Deadlines

The Deadline for all Listening Post materials (Includes articles, ads, photographs to appear in the next issue) is September 23, 1992.

ILA LISTENING POST ADVERTISING

To provide service to ILA members and suppliers, the ILA Listening Post will accept advertising. Acceptance of all advertising will be subject to editorial approval.

1992 RATE

Full Page.....	\$250.00
1/2 Page.....	\$150.00
1/4 Page.....	\$75.00
1/8 Page.....	\$40.00

All ads must be camera-ready and prepaid. Send all material and ads to:

LISA VICKERS, Editor
Dept. of Comm. & Theatre
The University of North Alabama
Box 5189
Florence, AL 35632
(205) 760-4596

Election of Officers

1993 ILA Officer Nominations

President (ascends)	Michael Gilbert
First Vice President (ascends to President)	Sheila Bentley
First Vice President-Elect (ascends to First Vice President)	Margaret Fitch-Hauser
Second Vice President	Victoria J. Emmert
Secretary	Harvey Weiss
Member-at-Large (International)	Terry H. Ostermeier
Member-at-Large (Public Relations)	Sandy Stein

President Michael Gilbert



Michael Gilbert has been an ILA member for eleven years. He has presented a variety of programs including several on the listening behavior of school principals. He has served on the research, site selection, public policy, program planning, and public relations committees. Michael has been active in making presentations about listening at various professional organizations. He states that he is motivated "to continue with the development of listening skills in the varied audiences served through ILA and to assist with the growth of ILA."

First Vice President Shelia Bentley



Shelia Bentley has been an ILA member for nine years. She has presented papers at every conference but two since joining ILA. Her major focus is the importance of improving memory and listening. Her dual role in both consulting and education gives her special insight into the two major groups comprising our organization. Sheila has served as Second Vice President and Secretary, chaired the site selection and nominating committees, and served on program planning and membership committees. She states that she is motivated "to continue to offer the outstanding quality of product that we offer to our members (including) ... well run conferences that supply state-of-the-art information and ideas, our professional newsletter..., (and) our developing journal." Sheila's goals include increasing

membership, encouraging continuing development of the journal, and encouraging regular regional meetings.

First Vice President-Elect Margaret Fitch-Hauser



Margaret Fitch-Hauser has been a member of ILA for thirteen years. At the thirteen conferences she has attended, she has delivered eight ILA convention presentations, three of which have placed in the top three papers for the Ralph Nichols award, and one of which placed first in this competition. In addition to several articles in the *ILA Journal*, Margaret is a contributing author to Bostrom's *Listening Behavior: Measurement and Applications*. She has served on the ISIP Advisory Board for five years, the ILA nominating committee, is vice-chair of the research interest group, and is Second Vice-President

LISA VICKERS
U. No. Alabama
Box 5189
Florence AL
35632

Lisa: Use this for my 1-205-760
Nominations Committee Bio FAX
4329

ILA. Margaret is active as a teacher, researcher, and a listening consultant. Margaret's goals include making ILA a clearing house for information about listening and intrapersonal aspects of communication, and increasing the credibility of ILA while maintaining the supportive atmosphere which exists among all the interest areas in ILA.

**Second Vice President
Victoria J. Emmert**



Victoria J. Emmert (Vickie) received her Master's Degree in psychology from the University of Wyoming in 1976. She is presently finishing work on her doctorate at the University of Iowa. She is the author of a chapter on Interaction Analysis and the co-author of a book about interpersonal communication. She is an active communication consultant for schools, hospitals and businesses in the areas of research, listening, interpersonal communication and conflict resolution.

Vickie has been a member of ILA since 1986. She has presented workshops and papers at ILA conventions. Three of her papers have been in the top three papers for the Ralph Nichols Awards for top paper. Vickie has chaired the Nominating Committee, and chaired the research committee. She serves as a reviewer for the Ralph Nichols and James I. Brown awards.

**Secretary
Harvey Weiss**



Isa Faenberg
Harvey Weiss has been a member of ILA since the beginning. He has attended all the conferences but one, and two summer conferences. He has served as Member-at-Large, the ILA Archives Chair, and been a member of the Program Committee. In 1983, 1984, and 1991, he received the Program, President's, and Recognition Award, respectively. He is currently serving as the Secretary of the Executive Board.

**Member-at-Large
(Public Relations)
Sandy Stein**



Sandy Stein has been a member of ILA for five years. She has attended five conferences at which she has made four presentations. Sandy terms herself a

"go getter" and is looking forward to getting the word out about ILA in this, her first office in ILA.

**Member-at-Large
(International)
Terry Ostermeier**



Terry Ostermeier is a founding member of ILA. He has attended seven conferences and one summer conference, at which he has made six presentations. He has served as a member of the Nominating, International Outreach, and Research Committees. In addition to presentations about listening at ILA conferences, Terry has presented papers about listening at conferences of the Central States Communication Association, the Wisconsin Communication Association, and the German Speech Association. He has also published articles about intercultural communication in the *World Communication Journal*, and in the book *Sprechkultur im Medienzeitalter*.



1994 Nominating Committee

Carolyn G. Coakley



Carolyn has been a member of ILA for twelve years and has been active in presenting programs at ILA conventions, authoring books, chapters and journal articles on listening. She has served as President, First Vice President, Secretary, Executive Board Member, and has chaired or been a member of almost every committee in ILA. She has received the ILA Research Award three times, the ILA President's Award, the ILA Listening Hall of Fame Award and the Ralph G. Nichols Top Three Papers Award.

Ethel C. Glenn



Ethel has been a member of ILA for eight years. She has presented workshops and papers at ILA conventions, one of which received the Ralph Nichols Award for top three papers. Ethel has served as Editor of the *Listening Post* for

four years and was First Vice President and President of ILA. She received the ILA Special Recognition Award in 1987.

Michael Purdy



Michael has been a member of ILA for twelve years and has attended eleven conferences. He has been a member and served as Chair of the Research Committee, and was an on-going member of the convention program committees for the first three years. Michael has made fifteen presentations at ILA conferences.

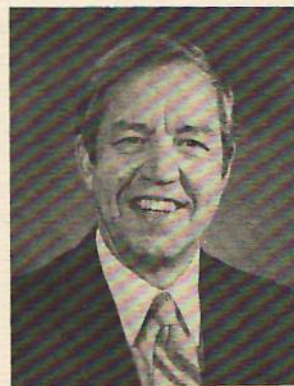
Charles Roberts



Charles has been a member of ILA for seven years and has made five presentations at ILA conferences. He has served as chair of the Ralph Nichols Research Award Committee since 1991

and was Executive Director of ILA from 1988-1991. He is currently a member of the editorial board of the *Journal of the International Listening Association*. He received the Ralph Nichols Award for the top three research papers in 1987.

Tom E. Wirkus



Tom has been a member of ILA for eleven years and has made three presentations at conferences. He has served as a member of the program planning committee for two conventions and was also a member of the public relations committee.

CONVENTION REMINDERS

- **New Members Contest**
Deadline: March 6, 1993
Winner Receives \$100.00
- **Aerobics Workout**
Friday, 7:00 am - 7:45 am
Saturday, 6:45 am - 7:30 am
Bring your workout gear!
- **Line Dancing Lessons**
at the cocktail party. Dress to join in the fun.

Election Procedure

The 1993 ILA nominees will be introduced at the business luncheon, after which the floor will be opened for new nominations.

If no new nominations are received, the officers will be elected by acclamation. If new nominations are received, an election will be held on Saturday morning.

If you are unable to attend the convention and wish to vote through an active member who will be in attendance, sign the proxy form, place it in a sealed envelope with the word "PROXY" and the member's name written on the outside, enclose it in another envelope and mail it to Mary Wise, Executive Director.

PROXY

I, _____,
hereby give my proxy

to vote in the election at the ILA Annual Convention held in March 1993.

Signed: _____

Date: _____

Important Addresses

International Office: Executive Director,
Mary Wise
Center for Information and
Communication Sciences
Ball State University
Muncie, Indiana 47306

The Listening Post: Lisa Vickers, Editor
Dept. of Communication
and Theatre
University of North Alabama
Box 5189
Florence, AL 35632

The ILA Journal: William E. Arnold, Editor
Dept. of Communication
Arizona State University
Tempe, AZ 85287-1205

Greg Enos has made the transition to a consultant position with Work Systems Associates, Inc., an organization specializing in strategic planning, management development, productivity improvement, and total quality management. He will be consulting, training and managing projects for the Marlboro, MA company. Listening and communications training are key components of the Teambuilding program offered by WSA. Greg previously was corporate training manager for Raytheon Company.

Richelle Colley, a December speech communication graduate of the University of South Florida and a new member of ILA, recently was honored by the Florida Speech Communication Association at their sixty-second annual convention in Fort Lauderdale. Her paper, "The Rhetoric of War," was unanimously selected as the winner in the first statewide undergraduate competitive papers program. It will be published in a future issue of the *Florida Communication Journal*.

Tom Wirkus has been elected to a four-year term as director of the Wisconsin Public Radio Association. Wirkus was elected by WPR listeners statewide to represent the public radio audiences for WLBL in Highland and WHLA in La Crosse.

In addition to being a professor of Speech Communication at University of Wisconsin-La Crosse, Wirkus serves on a number of community boards and leads a popular jazz ensemble.

The Wisconsin Public Radio Association is the member organization for over 27,000 listeners who support the state public radio network with their contributions and activities.

James Management Services of London, England, has approached Frank Freshour about the possibility of marketing his recently published book and audio cassette album, *The Power of Listening*, in the United Kingdom and Europe. Freshour has also

been busy with speaking, training and consulting in listening and with other inter- and intrapersonal communications. His list over the past year has included: two ASTD presentations, two Florida Reading Association presentations, Tampa Port Authority, Institute for the Advancement of Teaching, Training Magazine Best of America Conference, Association of Teacher Educators and Suncoast Area Teacher Training.

Jim and Mary Louise Shannon celebrated their 40th wedding anniversary in August. Their children, Dr. and Mrs. Dwight Robertson (daughter, Collen) and Dr. and Mrs. Brett Shannon, hosted a round of parties for the couple which included a day at the Saratoga racetrack and a banquet at the historic landmark Century House Inn.

NY Region ILA Fall Conference a Big Success

"Listening: A General Semantics Perspective" and "IT Works' Ideas: Activities & Strategies Found to be Successful In the Teaching and Training of Listening" were the two themes of the day conference held by the NY Region of ILA. Thirty-eight participants met at Montclair State College November 21 and were led in discussion and activities focusing on the topic *Listening: A General Semantic Perspective*.

For the morning sessions, Dr. Susan Kodish and Bruce Kodish, members of the New York area Institute of General Semantics and editors of the *General Semantic Bulletin* explored the background of General Semantics and the listener-speaker relationship; the role of assumptions in listening; increasing nonverbal awareness and the micro-effects of language.

In the afternoon sessions, ILA members Lynn Judd, a teacher at North Hunterdon High School, NJ, and Dr. Dan Corey, a teacher at Paramus High School, NJ, got the participants involved

in activities that they have found to be successful in the teaching and training of listening. Lynn focused on "Listening and Self-Talk" and Dan involved the group in "Listening and Visualizing." A very engaging discussion was generated by both presenters. According to many of the participants, the day conference "...was another exciting experience in listening for the NY Region of ILA."

—Wayne Bond

Speaking of Listening...

Following is a list of possible "listening" resources some of our members wish to share with you. If you know of any resources you have found to be helpful in your research or understanding of listening, please send them to the *Listening Post* and we'll share them, too.

From Harvey Weiss, a book on listening as empowerment:

Listening to Your Inner Voice, Douglas Block
503-284-2848,
Comp Care Publishers
2415 Annapolis Lane
Minneapolis, MN 55441

From Sybil Conrad, two books recommended to her by a social worker:

How to Talk so Kids Will Listen and Listen so Kids Will Talk,
Adele Faber and
Elaine Mazlish
Avon Books, publishers

Siblings Without Rivalry: How to Help Your Children Live Together So You Can Too
Adele Faber and
Elaine Mazlish
Avon Books, publishers

Also from Sybil, two books recom-

mended by a child psychologist, Dr. Betty Osman, for their "wonderful limericks, as the best source for developing memory for print and a quality of listening that will last throughout their lives:

I Met A Man, John Ciardi

Where the Sidewalk Ends,
Shel Silverstein

Students in the ILA: The Other Side of the Podium

It's winter, and aside from skiing, holidays, and general cold weather caravorting, it also means that there are only a few short months until the ILA convention in Memphis. Any of you who have been to one of the past ILA meetings knows that you can expect to learn new things, hear new ideas and, most importantly, meet fun and helpful new friends. The one problem with ILA meetings is that they end far too soon.

As students, we have to take advantage of these annual opportunities to get the most out of our professional involvement with the ILA. To help you do that, Todd Thomas and I are planning a STUDENT ROUNDTABLE session at the convention. This will be an informal opportunity for students to network with each other and discover more about our fellow listening students. Some issues that may be of interest are:

- I. Research:
 - a. Potential research topics in listening.
 - b. Possible publication opportunities in the field.
- II. Teaching
 - a. Incorporating listening into a traditional communication curriculum.
 - b. Developing listening courses.
- III. Service to the ILA
 - a. Ways to encourage more

student participation in ILA.

- b. Special student projects at annual conventions and regional meetings.

Aside from the STUDENT ROUNDTABLE we also want to encourage you to submit research papers for potential presentation at the convention. If you have a manuscript please submit it by January 31, 1993 to
Todd Thomas
Indiana University,
Speech Comm. Department
809 E. 7th St.
Bloomington, IN 47405

So strap on your blue suede shoes, pack your jelly donuts and sunglasses, and come to Memphis with ideas, questions, concerns, and a listening ear. See you there!!!

—Mike Fitzgerald

Programs Convention Papers Being Collected in Computer Database 80-~~81~~⁸⁴+Summer-

With the help of a graduate student I now have a database on an IBM compatible computer with the basics of all of the program presentations for ILA conferences at Orlando-March 1985, St. Paul-1985, San Diego-1986, New Orleans-1987, Toronto-1987, Scottsdale-1988, Atlanta-1989, Indianapolis-1990, Dublin-1990, and Jacksonville-1991. I am awaiting the copy for this year's conference in Seattle. If any one has earlier programs and/or would like to help extend this database I would welcome the assistance. Eventually, I would like to merge this database with sources others have on listening being compiled by Steve Rhodes. The papers from convention programs are in a spreadsheet program but I will soon have them organized in a DBase compatible database.

—Mike Purdy



adam's mark
memphis

*Welcome
to the
Adam's
Mark Hotel
and to
Memphis,
Tennessee.*

*We wish you
a successful
convention and
a year with good
listeners.*

