

LISTENING POST

© ISSUE NUMBER TWENTY-FOUR JANUARY, 1988

SCOTTSDALE: Again It Will Make A Difference

Scottsdale welcomes the International Listening Association! Scottsdale, a center for the arts and fine shops, is relaxed and comfortable every March. The temperature in March averages 65° F with a high of 75° F. Appropriate clothing will include casual, short-sleeved cotton dress. Light jackets or wind-breakers will be helpful in case of rain (which occurs very seldom!). You may find it too cool to swim unless the heated pool is sufficient to entice you. Golf and tennis clothes should also be packed. Don't forget the horseback riding, biking and walking. You will love all of it, so pack clothes that reflect the outdoor life of Scottsdale, Arizona.

Interesting sights to see include, Scottsdale's more than 100 art galleries, which exhibit Native American art, sculpture and Western art. There are many fine restaurants to enjoy as well as the Kerr Cultural Center which features jazz and classical music. The beautiful campus of Arizona State University, in nearby Tempe, and the sights of Phoenix, highlighted by the Heard Museum for Native American Art, are close at hand. Trolleys and buses will be right outside the Doubletree Resort's door and will take you to your destination.

(continued on page 2)

Memories are Made at ILA Conventions

by President Carolyn Coakley

February 17-19, 1980--Atlanta, Georgia... I remember the anxiety I felt as I journeyed to the first ILA Convention; I would know no one except Andy Wolvin. Within the first hour at the convention hotel, I knew another person, Bud Williams. With each new hour, I felt less and less anxious as I met more and more caring individuals who shared my interest in listening. And, then, I met Ralph Nichols. As a teenager might approach a favorite athlete or musician, I approached Dr. Nichols with awe and shyly asked if I could have my picture taken with him. Returning home, I found that during those short three days, my anxiety had turned to inspiration--inspiration provided by new friends and new ideas about listening. My only disappointment was finding that the picture of Dr. Nichols and me turned out to be blurry, but I knew--even if no one else could tell--that he and I were in that picture!

March 4-6, 1981--Denver, Colorado... I remember the excitement I felt as I was traveling to the second ILA Convention. Unfortunately, like many other attendees, I confronted snow storms during my flight and arrived at the convention hotel several hours after the convention had officially begun. However, the

greeting by former friends and the meeting of new friends quickly transformed the cold of Denver to the warmth of ILA. It was in Denver that I shared a room with Edie Cole (whom I had met in Atlanta); dined with Sara Lundsteen; shopped with Tom Hickerson; attended valuable program sessions, including those of Harvey Weiss and Nan Johnson (now Curiskis); and first met Susie Berkheimer (whose home is only twenty miles from mine in Maryland!). Once again, I returned home with more new friends and more new ideas about listening.

March 3-6, 1982--Washington, D.C.... I remember that this convention was different. Staying at home rather than at the convention hotel was a mistake. Even though I lived only thirty minutes from the convention hotel, I missed the camaraderie that I had previously experienced. But, there are still fond and vivid memories: attending the pre-convention research meeting; registering Peter van der Schaft at his first ILA Convention; smiling at Susie Berkheimer's red signs; appearing on a Washington TV show, "Morning Break," with Manny Steil and Tom Hickerson; presenting my first ILA program session; feeling the closeness of ILAers as Suzanne

(continued on page 2)

Scottsdale: Again it Will Make a Difference (continued from page 1)

There are, of course, tours to the Grand Canyon which include stops at Oak Creek Canyon and Sedona. Trips to Laughlin, Nevada for those gamblers in the group, are being arranged as is a trip to Mexico. Details on the trips will be available soon. Just let us know where you want to go in the Southwest and we will be sure you get there ASAP (as soon as possible) and ACAP (as cheaply as possible).

The Scottsdale convention of the ILA will make a difference to you and to us. We promise a stimulating and informative conference combined with unsurpassed opportunities for you to enjoy the elegant, always changing vistas of the American Southwest.

Don't miss a chance to see the Grand Canyon - believe me it's more than GRAND - and attend a GRAND ILA convention that will make your professional and personal lives grander than ever before.



Carol Ann Valentine
Local Arrangements
Chair

ENTER - GRAND TIMES on your calendar today. We guarantee! It will make a difference. **COME** to Scottsdale.

For more information contact Carol Ann Valentine, Department of Communication, Arizona State University, Tempe, AZ 85287. (602) 965-2358.

Memories are Made at ILA Conventions

(continued from page 1)

Pemslers led us in the singing of "Kum-Ba-Ya", and being elected as ILA Secretary. This time, I left the convention with more new friends, more new ideas about listening, and more commitment to ILA.

March 2-5, 1983-St. Paul, Minnesota... I remember traveling to this convention with Susie Berkheimer. And, I remember that the convention was again rewarding to me as I saw **Listening** on display for the first time; dined at Forepaughs; toured the Omni Theater; attended executive board meetings; presented the new First Vice President, Andy Wolvin, with a box of Sees candy; and met new friends such as Dean Thomlison, Judith Andrien, and Joan Sayre. Although each convention thus far had been unique, this convention too, gave me more new "gifts" of friends and listening ideas.

March 7-10, 1984-Scottsdale, Arizona... Of all of the ILA Conventions that had previously been held, this one was the most special to me. I remember the hot days and cool nights, the clear sky, the trip to Rawhide, the Doubletree Inn's chocolate chip cookies, Dr. George Smith's keynote address, the excellent program sessions, the socializing in the lounge, and the "get away" pool party. When I left Scottsdale, I left with more new listening ideas than ever before and more special memories than ever before.

March 14-16, 1985-Orlando, Florida... Like Scottsdale, Orlando was beautiful with warm sun, clear skies, and excellent hotel facilities. I remember attending Manny Steil's pre-convention session; being busy with Nominating Committee Chair duties; giving Jim Floyd a chambered nautilus shell that was a replica of the one pictured in his listening book; dining on the Empress Lily; serving as Andy Wolvin's "sounding board"; and receiving two awards. When I left Orlando, I felt new strength and an increased desire to promote effective listening.

March 13-16, 1986,-San Diego, California... I remember looking forward to another year of sun and warmth and finding cold and rain. But, I realized that the weather doesn't determine the success... and the warmth of an ILA Convention. I remember, too, being nervous, for I was a candidate for First Vice President. My nervousness, though, didn't distract me from learning and growing as I attended numerous worthwhile program sessions. Leaving San Diego, I had not only additional friends and listening ideas but also a major additional responsibility--serving as ILA's First Vice President and the planner of the 1987 convention program.

March 4-8, 1987-New Orleans, Louisiana... Although this convention is the most recent, I remember it least well. Being convention program chair, I had so many concerns that I didn't have time to appreciate each convention event as I had in the past. Although I didn't get to attend many program sessions, I did get to know more ILAers than ever before because I had had much contact with many attendees prior to the convention. The few memories I do have are fond ones: being treated "royally" by the Fairmont Hotel; being appreciative of those who had helped me implement the convention; having special friends to go to for advice and comfort; witnessing a marriage proposal; and again having my picture taken with Ralph Nichols. As I returned home from New Orleans, I had an even more important position, President of ILA. And, I must add, the picture of Ralph Nichols, Lucille Nichols, and me is clear!

March 9-12, 1988 Scottsdale, Arizona... I look forward to another rewarding ILA Convention where not only "Listening Makes the Difference" but also ILAers make a difference in this lady's life. I hope that each of you share my anticipation of hot days, cool nights, new friends, and new listening ideas.



ILA LISTENING POST

Listening Post Deadlines

The **Deadline** for all Listening Post materials (Includes articles, ads, photographs to appear in the next issue) is **April 1, 1988.**

ILA LISTENING POST NOW ACCEPTING ADVERTISING

To provide service to ILA members and suppliers, the ILA Listening Post will accept advertising. Acceptance of all advertising will be subject to editorial approval.

1988 RATES

| | |
|-----------|----------|
| Full Page | \$250.00 |
| 1/2 Page | \$150.00 |
| 1/4 Page | \$ 75.00 |
| 1/8 Page | \$ 40.00 |

All ads must be camera-ready and pre-paid. Send all material and ads to:

ETHEL GLENN, Editor
Communication Department
University of North Carolina
Greensboro, NC 27412

PROPOSED CHANGES IN ILA BYLAWS - 1988

NOTE: Words within () are additions.

1. ARTICLE IV - OFFICERS

Section 5.

Treasurer.

(3. Shall serve as financial consultant and advisor to the ILA Executive Board and to any committee dealing with financial or fiscal issues.)

2. ARTICLE VI - EXECUTIVE BOARD AND COMMITTEES

Section 3. Committees.

1.by Member-at-Large #1; (Publications;) and, Site Selection.

3. ARTICLE VI - EXECUTIVE BOARD AND COMMITTEES

Delete all of Section 4. and add a new Section 4. as follows: (Section 4. Publications Committee. This committee shall consist of five members appointed by the Executive Board to serve a one year term. Members may be reappointed to serve an additional one or more one year term. This committee shall review and recommend policies to the Executive Board.

1. JOURNAL. A minimum of one Journal per year shall be published.

a. Editor and Business Manager. Nominations for editor and business manager shall be submitted to the Publications Committee by the membership. The Executive Board, after consultation with the Publications Committee, shall appoint an editor and

business manager. The term of each shall be three years and each may be reappointed for an additional three year term.

b. Editorial Board. An editorial board for the Journal shall be appointed by the Executive Board after consultation with the Publications Committee and the Editor. Members of the Editorial Board shall be appointed for a one year term and may be reappointed to serve an additional one or more one year term.

2. NEWSLETTER. The Newsletter, Listening Post, shall be published four times a year. Nominations for editor shall be submitted by the membership to the Publications Committee. The President of ILA, after consultation with members of the Executive Board and the Publications Committee, shall appoint the editor. The editor shall be appointed for a two year term and may be reappointed for an additional two year term. The editor shall appoint associate and/or assistant editors from recommendations made by the Publications Committee.)

Submitted by Bylaws Committee.

Bob Bohlken

Bill Gering

Fred Goodwin

Dick Quianthy

Ward Schendel

Larry Norton, Chair

Establishing a Regional ILA:

by Wayne Bond

"THE BEEFSTEAK CHARLIE COMMITTEE" THE NEW YORK REGION, ILA

"The Beefsteak Charlie Committee" - a new ILA Committee? Not really. But close. This is the title given to the first organizing group of the New York Region, ILA. At the 1984 ILA Convention in Scottsdale, Carole Grau, Wayne Bond and James Gallagher were so excited about the Convention that we felt it absolutely necessary to pass the excitement on to those members back home in the New York area that were unable to attend, so we called a meeting of the New York region people attending the '84 Convention and made plans for an organizational meeting of a NEW YORK REGION, ILA as soon after the convention as possible.

As soon as we returned home, Carol Grau made reservations at BEEFSTEAK CHARLIE'S Restaurant on Broadway, New York City; I formulated a mailing list and the call went forth inviting those interested in forming an informal group of ILAers of the area to meet June 14th for dinner and planning. Eight people responded and the group was off and running with plans for its first Listening Seminar to be held in September at Westchester Community College

From the "Beefsteak Charlie Committee" of eight we have met each fall and spring since and have continued to grow. Our first meeting at Westchester Community College, September 1984, had about 15 attending and at our last meeting, in October, '87 at Monclair State College, we had 50 in attendance.

Why this bit of history and information? Now that ILA has periodic Summer conferences and only one annual Convention, the Executive Board discussed recommending that ILA members may want to establish regional meetings in lieu of the summer conference and Carolyn Coakley asked me to submit what she calls a PLAN OF ACTION (a plan for sug-

gesting how a group might organize a regional meeting of ILAers based on the format of the New York Region, ILA). In response to Carolyn's request, the following is just a suggested format that we in the New York area have found helpful.

The BEEFSTEAK CHARLIE COMMITTEE of eight decided that they wanted the "regional organization" to be easy to manage and informal. Thus the following PLAN OF ACTION is brief and hopefully helpful to any wishing to organize similar groups.

Your PLAN OF ACTION might include the following but of course must meet the needs of your group.

Action One: **SET A PURPOSE:** The New York Region's purpose was to meet informally, share listening materials and activities, information, experiences and ideas in Listening Education and Training. We have found that the informal meetings have been really successful and greatly aided in creating interest.

Action Two: **ESTABLISH A MAILING LIST:** The mailing list can be established from the ILA Directory and of course new members can be added as the group grows. It is important that one person be in charge of the mailing list for obvious reasons.

Action Three: **DETERMINE HOW YOU WANT TO BE ORGANIZED:** NY Region is organized very informally without officers. Carol Grau and Wayne Bond tend to serve as conveners and at each Fall and Spring meeting, the group decides where it will next meet, who will be responsible for the program, and who will send out the announcement of the meeting. With this organization, we find that we spend more time discussing and sharing ideas on listening than on

(continued on page 4)

Establishing a Regional ILA

(continued from page 3)

business meetings. This format meets our needs; of course other groups may want a more formal structure.

Action Four: DETERMINE HOW OFTEN YOU WANT TO MEET: For the NY Region, we found it very helpful and successful to meet in the Fall and Spring-latter October, early November and Late April, just after the March ILA Convention. We are able to bring back materials and ideas from the Convention in the Spring and use the Fall meeting to get the year started and motivate members to get involved in Listening activities.

SHARE YOUR CITY WITH ILA MEMBERS

What goes around... comes around! It is difficult to believe that we will celebrate our Tenth Anniversary next year in Atlanta. Since our founding in 1979, we have enjoyed the hospitality of cities such as St. Paul, Denver, Washington, D.C., Scottsdale, Orlando, San Diego, Toronto, and New Orleans.

Now is your chance to have your city included as one of our future convention or conference sites. We are looking for ILA members who would like to serve as Local Arrangement Chairs to host ILA conventions for the next ten years. If you are interested in serving as a Chair or have a city that you'd like to have included as a possibility, please contact (by February 15, 1988):

Kittie W. Watson
Dept. of Communication
Tulane University
New Orleans, LA 70118
(504) 865-5730 or
(504) 831-4440

Action Five: FOLLOW-UP: After each meeting it is helpful to report the results of the meeting to the Listening Post and announce the next meeting date if it is known.

This PLAN OF ACTION has been exciting for the NY Regional group. We believe the BEEFSTEAK CHARLIE COMMITTEE did us a great service in organizing our Region to share experiences in listening. We strongly recommend other groups throughout the nation and other countries form Regional Groups of ILA. If we can be of further assistance, let us know. **THE NEXT NEW YORK REGIONAL, ILA MEETING WILL BE HELD APRIL 30th AT MONTCLAIR STATE COLLEGE.**

Who's Who in Listening Training, Speaking & Consulting: A Referral Booklet

The 1988 Referral Booklet will be typeset this month and will go to the printer in early February. ILA members who submitted an application and listing fee will receive a complimentary copy in February. Other booklets will be sold through the Executive Office and will be available for sale to members in Scottsdale.

IMPORTANT ADDRESSES

Remember these three important addresses:

International Executive Director, Dick Quianthy
Office: 1000 Coconut Creek Boulevard
Pompano Beach, FL 33066

The Listening Post: Ethel Glenn, Editor
Dept. of Communication & Theatre
UNCG
Greensboro, NC 27412

The ILA Journal: Voncile Smith, Editor
Florida Atlantic University
Boca Raton, FL 33431

A GIFT OF GOOD LISTENING

It is time for ILA members to renew membership and the Membership Committee would like to encourage you to DO SO if you have not. The Committee would also like to suggest you take advantage of a great way to get your colleagues and friends involved in ILA. At the suggestion of Susan Berkheimer, we have created an ILA MEMBERSHIP GIFT CERTIFICATE. All you need to do is fill out the attached form, send the form and a check for \$50.00 payable to ILA to Wayne Bond, Membership Chair, Dept. of Speech and Theatre, Montclair State College, Upper

Montclair, NJ 07043. The Membership Chair will send your friend a MEMBERSHIP GIFT CERTIFICATE compliments of you.

This is a great way to take care of those wedding, graduation and birthday gifts. And "listen" to this idea. When your birthday or anniversary or "I'm a great friend, give me a gift" day comes around, drop the hint to YOUR friends that you would just love to have an ILA MEMBERSHIP GIFT CERTIFICATE. Now you can GIVE and GET a GIFT OF GOOD LISTENING.

GIVE A GIFT OF GOOD LISTENING

Membership in the INTERNATIONAL LISTENING ASSOCIATION makes a unique and thoughtful gift for a friend, colleague, or business associate who is celebrating a Birthday, Graduation, Wedding or any other special day. And it is so easy. Just complete the form below with each recipient's name and address and include a \$50.00 membership fee and we will forward a MEMBERSHIP GIFT CERTIFICATE to your friend compliments of you.

GIFT RECIPIENT'S NAME: _____

ADDRESS: _____

CITY _____ STATE: _____ ZIP: _____

TELEPHONE: _____

COMPLIMENTS OF: _____

Your Name

Make \$50.00 Check payable to ILA and send to: Wayne Bond, ILA Membership, Dept. Speech/Theatre, Montclair State College, Upper Montclair, NJ 07043.

That Was Then, This Is Now!

The 1987 September issue of the LISTENING POST carried a group picture of an early listening workshop. Members were challenged to guess its date, location, and members in the picture. This first venture by the Archives Committee reaped massive responses and new-found memorabilia from you the readers. (Thanks Carolyn and Manny!)

They both guessed the correct event, a Three-Day Summer Seminar at the University of Minnesota St. Paul campus, on July 21, 22, 23, 1980. Its topic was "Teaching Listening." Both presented ample names of the participants in the picture; however, since it was also Manny's 42nd birthday, (let's see, that makes him....?) and was so presented with a signed card by all the attendees, I'll have to declare Carolyn the winner. Since she wasn't in attendance at the seminar, but simply a dogged investigative reporter, she will receive her own personal copy of the **1st Annual Listening Conference in Atlanta, Georgia, 1980**.

Regarding our up-coming display of our past history in Scottsdale, I am finding many glaring needs that require *your help and attention*. Yes, YOU, the one reading this very article right now!!! If any of you out there have any of the following materials, please send them on to me as soon as you can. My mailing address is, 2845 Medicine Ridge Road, Plymouth, Minnesota, 55441.

Conferences:

- Washington D.C., 1982 *Arnie*
program brochure, and pre-convention
POST ISSUE
- St. Paul, Minnesota, 1983 *Arnie*
program brochures, pre-convention
POST ISSUE
- Scottsdale, Arizona, 1984
pre-convention POST ISSUE

- Orlando, Florida, 85
program brochure, pre-convention
POST ISSUE
- San Diego, California, 1986
program brochure, ALL LISTENING POSTS
FOR 86!!
- Toronto Summer Conference, 1987
program brochures
- Membership Rosters 1982 through 1986

Committee decisions have not yet been reached on the kind of format we will use to display these materials. We are considering a general display in the registration area; or possibly a session slotted right into the program somewhere; or possibly use it as part of the first-timer meeting activity or session, or some or all of the above.

Also being considered is a display of the SPERRY Advertising campaign materials which was held in the early 80's in close conjunction with the formation of the ILA. Manny Steil was the consultant for the training package and the ad campaign put on by SPERRY which ran into the millions of dollars. If you have any of this treasured stuff laying around also send it along to me immediately. It would be appreciated.

The committee is also considering using this time of high member interest to cash in with some kind of fund-raising campaign using the historical materials on display as a source of a **trivia questionnaire**, with the individual donating a couple of dollars and the people with the correct answers being put into a drawing for some yet to be named prize. Raise a few bucks, have a little fun, OLE'?

So, keep those cards and letters coming in folks, we love it!

Harvey Weiss
Archives Chair

CALL FOR PAPERS!

James I. Brown Student Award
for Excellence in
Listening Research and Theory Development

The second annual **JAMES I. BROWN STUDENT AWARD** will be presented by the Institute for Study of Intrapersonal Processes (ISIP) at the International Listening Association (ILA) Convention in Scottsdale, AZ in March of 1988. The award, named in honor of Dr. James I. Brown, is presented for the best research based or theoretical paper submitted by a student.

Papers accepted to appear on the ILA Convention program are automatically eligible for the competition. Full-time students, as defined by the ILA Bylaws can compete. The award will cover the ILA convention fees (including meals), a cash award, and certificate of merit.

Members of the ISIP Advisory Board will serve as readers for the award. The paper will be presented at one of the Research Committee Meetings and/or on a panel during the conference. The award will be presented at the banquet at the end of the ILA Convention.

Interested students should submit their papers in triplicate by February 29, 1988. Please send your submissions to:

Andy Wolvin
Department of Communication Arts and Theatre
University of Maryland
College Park, MD 20742

CALL FOR PAPERS!

Ralph G. Nichols Award
for Excellence in
Listening Research and Theory Development

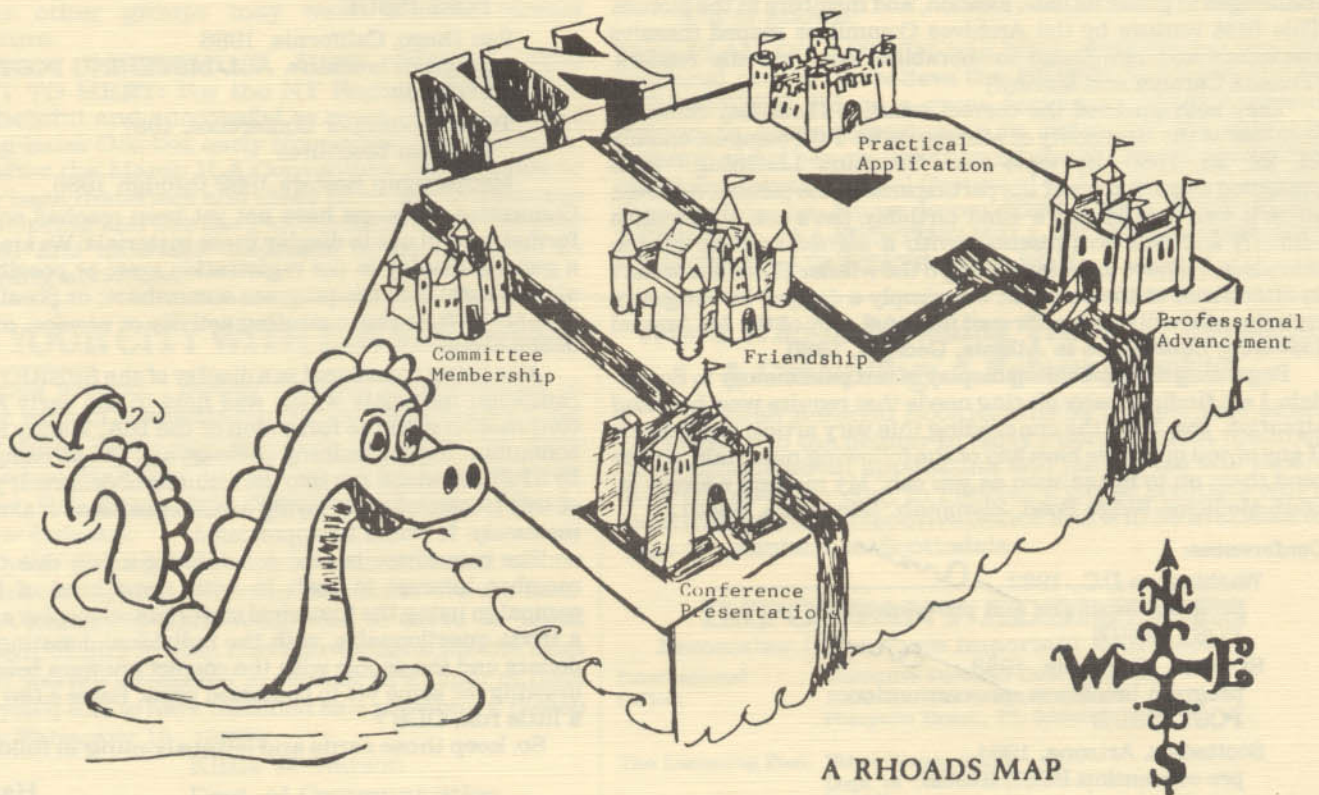
The third annual **RALPH G. NICHOLS AWARD** will be presented by the Institute for Study of Intrapersonal Processes (ISIP) at the International Listening Association (ILA) Convention in Scottsdale, AZ in March of 1988. The award, named in honor of Dr. Ralph Nichols, is presented for the best research based or theoretical paper presented at the conference.

The recipient will receive a cash award and certificate of merit. Members of the ISIP Advisory Board will serve as readers for the award. The award will be presented at the banquet at the end of the ILA Convention.

Interested participants must submit their papers in triplicate by February 29, 1988. Please send your submissions to:

Kittie W. Watson
Associate Director
Institute for Study of
Intrapersonal Processes
Post Office Box 5031
Contract Station 20
New Orleans, LA 70118

CHARTING YOUR WAY



Charting Your Way in ILA

JANE GLOTFELTY RHOADS

If you are a new member of the International Listening Association and planning to attend your first conference, you may wonder how you can become involved in the association. What roads of involvement are open to you? Here is a map for you. In fact, it's a Jane Rhoads' map.

Located in the center of the map and at the heart of ILA is Friendship, the persons you will meet and get to know. It is from these acquaintances that most roads and involvement in ILA originate.

Perhaps this aspect of ILA, the personal relationships and friendships would best be represented by a picture of food if this were a pictorial map. It is certainly true that ILA members love to eat and to visit. The first evening's activity is a get acquainted party, and the last event of the conference is the gala banquet. In between are the luncheons. Meals offer a wonderful opportunity to meet people. So, one road to involvement is through friendship.

Another road to involvement in ILA is through Program Presentations. Let the sessions you attend at this year's conference be spring boards to ideas for future presentations. If the association is to remain intellectually alive, it needs your ideas. ILA welcomes your submission of proposals for papers for the next conference. Giving conference presentations certainly leads to involvement in ILA.

One road to involvement is in the seeking of information. This destination is labeled Practical Application. We all come to ILA conferences with questions. These questions often involve content material and teaching strategies for the various areas of listening. You will discover that ILA provides a wonderful source of answers to these practical questions. You will find many sessions geared to the "how" and the "what" of teaching listening.

In addition, talk with other conference attendees. You will discover not only information, but inspiration. The ILA membership tends to be terribly enthusiastic about what it does, and loves sharing ideas and strategies. Let the search for practical answers lead you to further involvement in ILA.

And along the same line of journeying toward a goal, no "trip" through ILA would be complete without mentioning Professional Advancement. You will have the opportunity to attend sessions by, and to meet, the major authors and the leading consultants in the field of listening. If you seek knowledge, it is available. If you want tips on becoming a consultant, they are available. Let ILA lead you to greater professional skills and knowledge.

A final road or avenue of involvement that is open to you is through participation in the ILA committees. Because this association functions on volunteer labor, and because we have needs in many areas, your skills and interests can be of use to the association. Here is a list of committees that make up the International Listening Association: Convention Site, Bylaws Revision, Research, Local Arrangements, Archives, Elementary Task Force, Awards, Public Relations, Program Planning, Membership, International Outreach, Fund Raising and Publications. In addition there are two very specialized committees, the Newsletter, and the Journal. ILA needs your involvement, and you will gain from the experience.

In truth, all roads many not lead to Rome (especially in the United States), but ILA offers you many varied roads to involvement, and all of these roads lead to a greater sense of personal fulfillment and enjoyment. We are delighted you have decided to attend your first ILA conference and we invite you to join us on a truly exciting journey.

USING THE JOURNAL

by

Michael Purdy

The use of a journal as a means of class evaluation is a helpful addition (or alternative) to other assignments. The journal specifically focuses attention on the description of experience, the development of ideas, and the growth process. The journal is a place where experience, ideas, and change can initially be sketched and played out with disregard of evaluation. The student's day-to-day awarenesses can be noted, described in varying degrees of detail, and implications worked out in an informal writing style.

The facilitator/teacher reads the student's journal for creative exploration of the events in the life being observed. Grammar, spelling, and style are pushed aside in favor of development of skills of questioning, observation, and the quest for understanding. This is a vehicle for inquiry rather than conclusions.

Essential criteria for evaluating the journal include:

1. Completeness of work -- entries should be pursued with detailed description of experiences, use of examples to communicate illustratively, and to support the thoughts being developed.
2. Discussion of ideas -- ability to relate experiences to ideas about communication from the thoughts of others in relevant readings and class discussion. This should be a reflection of inter/intrapersonal work being done, as well as, interpersonal skills being developed.
3. Development of observations -- should include an awareness and discussion of communication skills and concepts at work in self and others.

The journal gives a boost to class discussion, since many incipient experiences and ideas are tried out in the journal and expanded upon in class. And the journal is a safe place to explore the meaning of experiences to self before venturing forth to share them with others.

To insure the immunity from evaluation that a journal may provide, and to add an extra layer of distillation to the entries in the journal, the facilitator/teacher may ask that only a summary of journal entries be handed in, a selection and summary of the best of each person's explorations.

Finally, think of a place that inspires and excites you, a place that gives you energy. Stay there for a few minutes, listening to the tone of that environment. (2-3 minutes)

Slowly, shift your attention to your body and then the immediate environment, gradually bringing your attention back to this room.

Group discusses:

1. What sounds were you aware of in the immediate environment? Why don't we hear these sounds all the time?
2. What did you hear within your body? Why did some people hear certain sounds like stomach or heart beat and others not hear these sounds?
3. What did you talk to yourself about? What other sounds did you attend to in your mind and consciousness? Are these sounds, this dialogue, always going on within us? Does it keep us from attending to other sounds and dialogue?
4. What sounds and places were inspirational and uplifting? What are the qualities of these sounds and what is the effect of listening in these special places? (Here, you might want to read the passage from Herman Hesse's *Siddhartha*. Siddhartha sits by a stream and hears many different sounds in the bubbling of a brook.)

In conclusion, you may want to talk about ways this exercise could be more fruitful. As a variation, you may want to combine this with a guided visual-imagery exercise, where, for example, each goes down winding steps into the basement of an imaginary house to a room especially reserved for listening. In that room they can experience some of these experiments in listening.

I welcome any related inquiry you may want to share with me.

GUIDED SOUND-IMAGERY BY MICHAEL PURDY

(An exercise in guided listening for "sound-imagery")

Often at listening conferences I have heard people refer of listening to visual imagery, and yet we listen primarily to aural experience, to sound. The following is my second effort at developing a guided experience for sound-imagery -- rather than visual-imagery. (Imagery is used here in the sense of imagination, rather than in its strict sense of a "mental picture", or "sculpted likeness" (**American Heritage Dictionary**).

The following is an approximation of what I would say in facilitating this exercise:

I am going to guide you through an awareness of the constant experiences we have with sound, but of which we are often not aware. You should follow along giving meaning from within yourself to the experiences I suggest. If at any point you feel disoriented or uncomfortable, you can listen to the sounds in the immediate environment to reconnect with a physical context for experience.

An Indian friend tells the story of his father who was a doctor with many patients and busy schedule. Each day as he left the office he would brush off his clothes as he went out the door for home, as if to brush off the cares and concerns of his work. We should now brush off the cares and concerns and worries of all other activities and clear our mind to listen.

We will begin by relaxing our bodies. Close your eyes, let go of the tension in your body and feel a warm comfortable feeling, like a hot tub, infuse your body, or feel your body let go like a loose Raggedy Ann doll (about one minute).

Now, focus your attention on the immediate environment letting yourself attend to all of the sounds you can hear. (2-3 minutes)

Next, focus on your body. What do you hear within yourself? Any sounds related to your body functioning? (2-3 minutes)

Now, listen within and to yourself, to "sounds" within your mind and consciousness. What sounds are present? What are you saying to yourself? (3-4 minutes)

Imagine the sound of something inspirational, music, a voice, or whatever, and focus upon that sound for a minute or two. (1-2 minutes)

NEW VIDEO VERSION OF WATSON-BARKER LISTENING TEST NOW AVAILABLE

SPECTRA, INC., PUBLISHERS announces the new VIDEO version of the WATSON-BARKER Listening Test (WBLT). The new VIDEO version is available in parallel forms for pre and post testing (Forms A and B). The **Video Short Form Version** is available for listening training programs and for generating increased listening awareness. Forms A and B of the test take approximately 37 minutes to administer, whereas the Short Form takes only 20 minutes to complete.

The new video forms of the WBLT incorporate visual vignettes of speakers talking in a variety of communication settings, followed by questions and possible answers in both graphic and narrated voice-over modes. The addition of narrated responses to the questions in addition to graphics containing the questions and answers on the video screen is a new feature that should enhance the usefulness of the test for a variety of audiences. Reading ability is no longer a limiting factor for subjects taking the new video version of the WBLT. Self-scoring answer forms are also included in the instructional package.

The original audio taped version of the WBLT was pilot tested in 1982-83, and was released for national distribution in 1984. The original version has been used widely for instruction and research in a majority of states in the USA and in over six foreign countries. Normative data for the original version are available for both college and professional audiences. The norms are based on over 20,000 administrations of the test.

For additional information about the new VIDEO version of the WBLT contact: SPECTRA, Inc., Publishers, P.O. Box 5031, Contract Station 20, New Orleans, LA 70118 (Phone: 504-831-4440).

Books on Communication, Listening, Leadership FOR CONSULTANTS, WORKSHOP LEADERS, AND OTHERS.

_____ **Effective Listening for Supervisors and Managers.** (70 pp.)

_____ **Management Skills for Supervisors and Managers.** (80 pp.)

_____ **Effective Communication for Supervisors, Managers, and Staff** (47 pp.)

_____ **Managing Time and Stress** (92 pp.)

Authored by Dr. Gib Whiteman (ILA Life Member)
Price reduced for ILA members from \$9.50 each to \$5.00 each (plus 50¢ per book shipping). All four titles \$17.50 plus \$2.00 shipping. No C.O.D.'s

Dr. Gib Whiteman, President (203) 453-4079

The Whiteman Resource

P.O. Box 224, Guilford, CT 06437

Enclosed is personal check or VISA/Mastercard

No. _____ Exp. Date _____
for the number of books marked above, with appropriate shipping costs. Send to (No P.O. Box):

Name: _____

Address: _____

City: _____ State: _____ Zip: _____

WHAT'S HAPPENING News & Notes About ILA Members

Florence Wolff has received an Official Commendation from the U.S. Air Force "for exceptional materials and outstanding presentational techniques" while conducting twenty-four U.S. Air Force seminars (3- or 6-hour sessions) for mid- and high-level management personnel during the past two years at various military locations. Also, she travels into other states expounding on her primary focus, "listening and learning in the classroom." Recently in Louisville, Kentucky, she addressed parents of gifted children on the topic, "Helping the Gifted Child to Listen and Learn." Her pedagogical research and philosophy of listening and learning are affirmed in a recent article, "Forget the Anecdotes and Attention-Getting Techniques: Students Must be Taught to Listen," published in *THE CHRONICLE OF HIGHER EDUCATION* (November 4, 1987) by ILA LISTENING POST Editor, Ethel C. Glenn.

(Ed. Note: Your editor thanks Florence for the nice plug about the *CHRONICLE* article. Actually, my original submission was titled, "Listening Across the Curriculum", a name that seems somewhat more positive. But the sentiment is the same. And the attitude works!)

Frank Freshour of the International Reading Association is continuing his busy schedule in promoting the need for improving listening and related interpersonal communication skills. The National Association of Elementary School Principals requested that he convert his convention speech on listening into a special publication. **Listening Effectively** has been sent to all of their membership, both in the United States and beyond our borders. Frank has also advanced listening at numerous conventions, speaking to the Florida Chapter of the National Speakers Association, the Florida Adult Education Association, the Florida Shorthand Reporters, the National Academic Advising Association, the Florida Reading Association, the National Social Science Association, College Survival, Inc. and the Suncoast Area Teacher Trainers. In early 1988 he is speaking and/or presenting workshops to the Association of Teacher Educators, Association for Supervision and Curriculum Development and National Council for Teachers of English. "Listening Effectively" can be found in **Streamlined Seminar**, Vol. 6, #2, Nov., 1987. Published by the National Association of Elementary School Principals.

me?!

Seeing Eye-to-Eye is rare
But even rarer yet, I fear
Is finding persons capable
Of hearing Ear-to-Ear

by
Corinne Geeting



Q U O T A T I O N S about listening

You can't fake listening. It shows.

Raquel Welch

One of the best ways to persuade others is with your ears--by listening to them.

Dean Rusk

Nobody ever listened himself out of a job.

Calvin Coolidge

One way to be popular is to listen to a lot of things you already know.

Anonymous

1988 ILA ELECTION

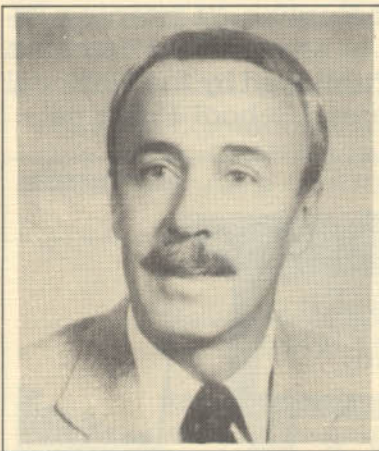
The Nominating Committee has established the following slate of candidates for the 1988-89 Executive Board:

- | | |
|-------------------------------------|---------------------------|
| President (Ascends) | Dr. Bill Arnold |
| First Vice President | Dr. Kittie Watson |
| Second Vice President | Dr. Wayne Bond |
| Secretary | Dr. Edie Cole |
| Treasurer | Dr. Terry Newton |
| Member-at-Large (1 year) | Dr. Judi Brownell |
| Member-at-Large (2 years) | Dr. Dean Thomlison |

Dr. Tim Gilmore will continue his Two Year term as Member-at-Large.

President

DR. WILLIAM E. ARNOLD



Bill is a Professor of Communication at Arizona State University where he has taught graduate and undergraduate courses in Listening and Organizational Communication. During 1985-86, Bill served as Acting Director of Graduate Studies. Since receiving his Ph.D. in Communication

from Pennsylvania State University, Bill has taught at Pennsylvania State University, University of Connecticut, University of Massachusetts, Case-Western Reserve University and Illinois State University. Bill has been an ILA member for six and one-half years, attending six annual conventions and been a program participant at each. He served as the Local Arrangements Chair for the 1984 Convention in Scottsdale, Arizona and was the Western Region Convention Planner for the 1986 San Diego Convention. Bill's area of focus is in the development of empathetic listening. He has authored or served as editor for numerous books, journals, monographs, research, and administrative-related articles. He has delivered over 90 Conference papers and has presented over 100 workshops on listening for local, state, business, service and governmental organizations. Bill has earned national recognition through his work in the Speech Association of America and the Speech Communication Association. As ILA's present 1st Vice President, Bill is Program Chair of the 1988 ILA Convention.

1st Vice President

DR. KITTIE W. WATSON



Kittie is an Associate Professor and former Chairperson of the Department of Communication at Tulane University and serves as Executive Vice President of SPECTRA Communication Associates, a consulting firm to private, public, and governmental organizations. An ILA Lifetime member, attending seven

Conventions and two Summer Conferences, Kittie was a program participant in Washington, St. Paul, Scottsdale, and Orlando. She has served as Secretary, and Chair on the Research Committee (1980 to present), Member-at-Large (1986-88), Local Arrangements Chair - New Orleans (1987), Fundraising Committee Chair (1987-88), Site Committee Chair (1987-88), Editorial Board - Listening Journal. Kittie has co-authored refereed articles, co-authored two books, plus contributed to two others. She is the co-creator of the Watson-Barker Listening Test. As a founding member, Kittie is committed to helping the ILA grow and prosper by focusing on member recruitment and public relations.

**When your work speaks for itself,
don't interrupt.**

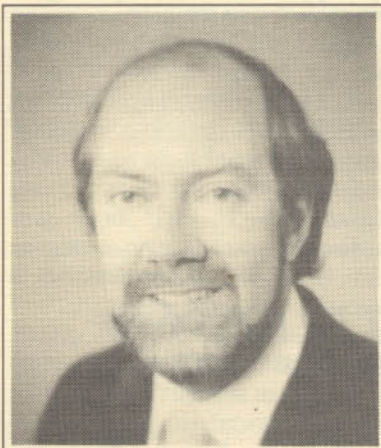
2nd Vice President
DR. WAYNE BOND



Wayne is a Professor in the Department of Speech and Theatre at Montclair State College, and has taught various college level courses in Listening, Communication, and Theatre. Wayne has attended seven ILA Conventions and three Summer

Conferences. He served the ILA Program Committee and chaired the Site Committee in 1984, has served as Treasurer and on the Awards Committee in 1986. In addition, Wayne was elected and served as 2nd Vice President in 1987. He was a contributor to the 1984, 1985, and 1987 Summer Conferences, and also to the 1985 and 1986 Conventions. Wayne has co-authored two basic speech texts and has worked actively as a consultant in listening training. Wayne received the New Jersey Governor's Award for Outstanding College Teaching in Speech and Theatre in 1986. Wayne desires to assist ILA in expanding the awareness of the enormous role listening plays in the communication process and the many aspects of life which listening influences. (i.e. business, professional, personal, social). Wayne wants to work towards growth in research and membership and encourage more collaboration in research and programming between the business/corporate training and education segments of ILA.

Treasurer
DR. TERRY NEWTON



Terry teaches listening at St. Edwards University in Austin, Texas. Terry has been an ILA member for seven years and has served as 2nd Vice President and Nominating Committee Chair. He has attended two Summer Conferences and five Annual Conventions as a program participant in 1983, 1984, 1985, and 1986. With special interest in International Listening Education, Terry has served as an educational consul-

tant in developing Listening throughout Mexico. In addition, Terry serves as a special consultant to the College Board. Terry is committed to serving as ILA Treasurer because of his experience, knowledge, and interest in building ILA into an impactful professional Association.

Secretary
DR. EDIE COLE



Edie is a founding member of the ILA and presently a family community/church volunteer. Edie has taught at Elmhurst College, Otterbein College, Ohio Wesleyan University, and the Columbus School for Girls. In attendance at every ILA Convention, she presented "Teaching the Church to Listen" in 1987. Edie has served on the ILA Public Relations Committee, the Governors Proclamation Program, and presently on the ILA Archives Committee. Edie is committed to ILA's growth of broader membership in order that we might create an organization of international viability and impact.

Member-At-Large (1 year - Public Relations)
DR. JUDI BROWNELL

Judi is an Assistant Professor at Cornell University. She has been active in ILA for six years, attending four Conventions and two Summer Conferences. Judi served on the Program Committee, Membership and Public Relations Committee, chaired the Textbook Display Committee, and is presently serving as the ILA Secretary. Judi has participated in the 1984, 1985, and 1987 Conventions, the 1985 and 1987



Summer Conferences. In addition, Judi will be presenting at the 1988 Convention in Scottsdale. Judi finds rewards in making others more aware of the importance of listening, helping educate individuals who are interested in learning about listening and sharing knowledge and ideas with colleagues. With special interest in Interdisciplinary research, Judi is committed to increasing awareness of ILA through specific ILA Public Relations strategies and programs.

**See back page for information
about the Election Format and
Voting by Proxy.**

Member-At-Large
(2 year - Fund Raising)
DR. T. DEAN THOMLISON



Dean is a professor in the Department of Communication at the University of Evansville. During his five years in the ILA, Dean has attended five Conventions and two Summer Conferences contributing in the 1984, 1985, 1986, and 1987 Conventions and the 1985 and 1987 Summer Conferences. He will

be presenting at the 1988 Convention in Scottsdale. Dean has served on the Nominating Committee, Site Committee, Task Force on State of The Listening Field, Research Committee, International Outreach Committee, Awards Committee, and the Program Committee. Dean is recipient of the Kellogg National Fellowship, a three year Leadership Fellowship, designed to encourage interdisciplinary study. Dean is committed to building a sound future for ILA by increasing recognition of the ILA as the professional association of record and reference for listening education, training, and research.

ELECTION — FORMAT —

The election format for the Ninth Annual ILA Convention will be as follows:

Friday, March 11th - Candidates will be introduced to convention attendees at the luncheon, and nominations will be opened to the floor.

Saturday, March 12th- Members will cast their ballots at the ballot station which will be open from 8:00 a.m. to 12:00 noon. Election results will be announced at the Gala Banquet on Saturday night.

VOTING BY PROXY

Pursuant to Article VII, Section 5 of the ILA Bylaws, members who are in good standing but who are unable to attend the Annual Convention may designate another member in good standing to serve as proxy. A proxy voter may cast as many votes by proxy ballot as he/she holds proxies. A proxy form appears at the bottom of this page. If you are unable to attend the convention, but wish to designate an active member as your proxy, please confirm with that member that he/she will be attending the convention and complete the proxy form. Send the completed form in a signed envelope to:

Richard L. Quianthy
ILA Executive Director
c/o Broward Community College
1000 Coconut Creek Boulevard
Pompano Beach, Florida 33066

I designate _____ to be my proxy
at the 1988 meeting of the International Listening Association.

Member Signature

Date

The Association expresses thanks to the 1988-89 ILA Nominating Committee for the excellent job of completing the nominations and biographies in time for this publication. Committee members are Manny Steil, Chair, Patricia Anderson, Jay Brandon, Carol Dubois, Marguerite Lyle, and Bill Arnold, Ex Officio.