



# LISTENING POST

ISSUE No. FIFTY-FIVE • OCTOBER 1995

## Opportunities of a Lifetime

by Sheila Bentley

One of the lifetime opportunities available to you as an ILAer is the opportunity to become a Lifetime Member. Imagine the prestige of being part of the select group that includes such distinguished people as Ralph and Lucille Nichols, Manny Steil, Florence Wolff, Kittie Watson, Larry Barker, and Nadine Marsnik. And just think, you don't have to do anything - you can buy your way into this group. (Ah, the advantages of capitalism!).

For those of you less influenced by prestige, there are very practical reasons for becoming a Lifetime Member. You can save money. The Lifetime Member fee is \$1000.00 (also payable in five installments of \$250 over a five year period.), and your convention registration is reduced to \$120, regardless of when you register (as opposed to \$150 for early registration). While your savings for the first ten years would only amount to \$50 (\$2200 for Lifetime Membership and ten years of convention registration verses \$2250 for ten years of regular membership dues and convention registration), your savings for every year after the tenth would be \$105/year - even more if membership fees go up.

The real advantage, however, to becoming a Lifetime Member is that you help provide financial stability to the organization. Lifetime Members' dues are invested in a separate interest bearing account, which is not included in the ILA operating budget.

(Continued on page 3)

## The Professional and Personal Power of Membership

by Amy Marcinisk  
Student Writer

When entering any new association, two of the first questions asked are "How will I benefit from this?" or "How will this association make my life better and easier?"

As an assistant to Kathy Thompson, Executive Director, and a new member of the ILA, I asked these same questions recently to familiarize myself with the Association. Seeking a mix in responses, I called various members and asked "What are your benefits of membership?" Here are a few of the answers I received.

As a student member of the ILA, Chris McCarrier at Alverno College finds that ILA "offers suggestions and makes me aware of the need to really listen. There is a reinforcement by belonging. It's so easy to get out of the mode to listen with the mind and the heart and be able to get rid of the biases."

One of the major benefits available to student members is the ability to participate in research for Tomorrow's Scholars program and compete for scholarly and cash awards. One of the specific awards offered is the James I Brown award which Todd Thomas, Assistant Professor of Communication at North Carolina State, has recently received. "The reaction I received from the people when presenting my paper for the award was extremely supportive. The mem-

bers were excited to come to the conference and to listen to what I had to say.

Winning this award was a very affirming experience. The ILA offers the largest student award of any other professional organization that I know, and more students should take advantage of this."

Todd Thomas won the James I Brown award as a student member of the ILA. Now that he is a regular member, he finds that the benefits available to him remain equally important. "The networking between members is both intellectually and personally rewarding. I get to spend time with people interested in the same sort of thing as myself. I

realize also that they are interested in the same thing, but it may not be in the same way (because of the various backgrounds of ILA members). This is challenging, but a very mind-broadening challenge."

Jean Groshek, a communications instructor at Alverno College, also lists the networking ability as an important benefit of the ILA. "The ILA offers the chance to meet others with similar interests, to be able to network with scholars from all over the world."

The networking aspect is important and beneficial to all of our members. With scholars affiliated in areas all over the United States, and all over the world, ranging from Australia to Sweden, California to New York, every member has the opportunity to meet at the ILA annual convention, this year in Sacramento,

(Continued on page 6)



## President's Perspective

In the last *Listening Post*, I presented the five year plan that the Board and I developed over the past year. As you probably recall, the plan is ambitious. However, I am confident that all of the items in the plan are within reach if we all pull together and work to move forward into ILA's third decade and the next century.

What is it going to take? It is going to take all of us renewing our commitment to ILA and our commitment to spreading the word about listening. In other words, all of us need to work as a membership recruiting committee.

Please think about why you joined ILA. Don't you know someone else that has the same need for affiliation with us?

If you have forgotten why ILA membership is important, let me tell you about some of the ILA projects and activities that are currently underway. First, we have a wonderful convention coming up in Sacramento. The board just met with Tommy Neuman at our convention hotel. Tommy has done a tremendous amount of work and has some really exciting things planned for us. Phil Emmert, the program chair, tells me the convention program is going to offer some great information. The fall board meeting was wonderful. Tommy arranged for us to have perfect weather, perfect food, and a perfectly wonderful time. He says he will do the same for the meeting in March. Please plan to attend so you can take advantage of this upcoming opportunity to learn more about listening.

Secondly, Kathy Thompson is working hard to organize our information resources so ILA can develop its resource center and become a valuable source of information about listening for media and any others interested in knowing about the subject. She is actively soliciting materials for her resources file. If you have any fact sheets, or other information that she can send to those who call the association, please send them to her.

Thirdly, we are now actively involved in the process of identifying listening competencies. If we are to truly be a resource about listening, we need to be involved in determining not just what listening is, but also what skills and competencies constitute effective listen-



ing at any level. To continue this progress, we must increase the number of resources we have available and the number of volunteers we have to work on our projects.

Fourth, the ILA is working hard on building name recognition and credibility. We are actively offering the association's services as a source of information about listening and listening experts. Kathy Thompson has received numerous calls from various media sources asking for more information. As a result of one call she was featured on Wisconsin Public Radio as our executive director to talk about ILA and listening.

The above items are only a few of the things that are going on. Of course we are always involved in projects to help us spread the word about listening and the work of ILA. To continue in the above efforts and to expand our sphere of influence, we need the active participation of our current membership. So, I ask two things of you. First, I encourage you to volunteer to work on the progress of our association. Wouldn't it be exciting if all 400 of us were out spreading the word and getting new people to join ILA. If all of us recruit the people we know who are actively involved in listening research, instruction, training, or anything else involving listening, we can insure the continued growth and influence of our important cause.

Yours in listening,  
Margaret Fitch-Hausler

## Site Selection Nominations

Feeling the effects of the budget crunch? Want to save on travel expenses to the ILA convention? The answer is as easy as nominating your city and agreeing to serve as Local Arrangements Chair.

The ILA Site Selection Committee is considering sites for upcoming conventions. Are you willing to host the ILA?

When nominating a city, please include information on: airlines serving the area, hotel and entertainment possibilities, colleges and/or businesses willing to donate the use of their media equipment for the duration of the convention (saves the association rental expenses), and the name of the ILA member agreeing to serve as Local Arrangements Chair.

Please send your nominations to Kathy Wahlers, ILA Site Selection Committee Chair, Dept. of Comm., Barry University, 11300 N.E. Second Avenue, Miami Shores, FL 33161.



### ILA LISTENING POST

#### Listening Post Deadlines

The Deadline for all Listening Post materials (including articles, ads, photographs to appear in the next issue) is December 9, 1995.

#### LISTENING POST ADVERTISING

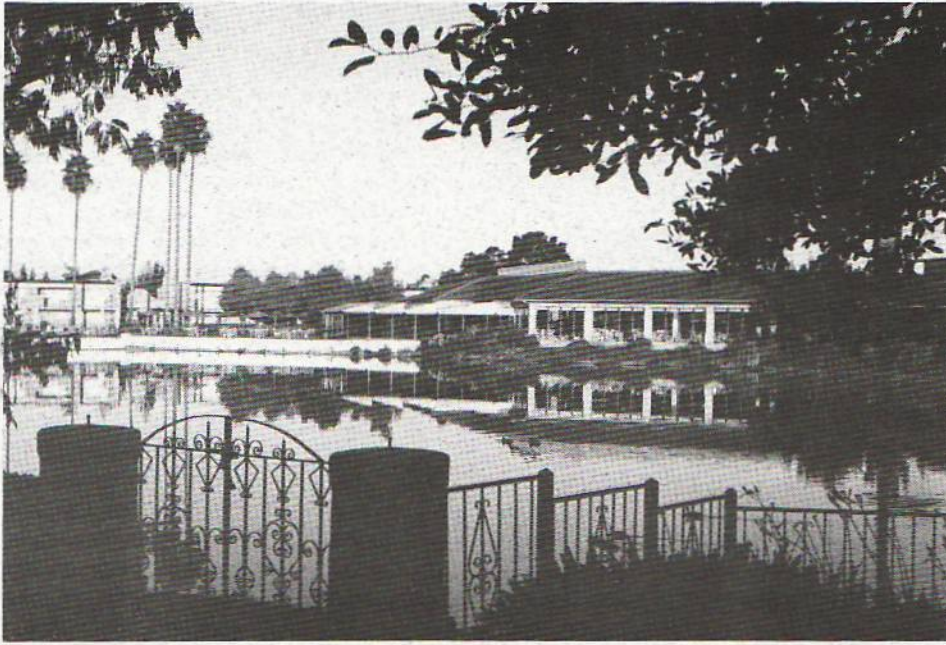
To provide service to ILA members and suppliers, the *ILA Listening Post* will accept advertising. Acceptance of all advertising will be subject to editorial approval.

#### 1995 RATE

Full Page	\$250.00
1/2 Page	\$150.00
1/4 Page	\$75.00
1/8 Page	\$40.00

All ads must be camera-ready and pre-paid. Send materials and ads to:

**LISA VICKERS, Editor**  
Dept. of Communication and Theatre  
University of North Alabama  
Box 5189, Florence, AL 35632



The Radisson Hotel – Site of Convention '96. Join us there March 14-16.

## Tomorrow's Scholars Program

Just a reminder that the student research papers for the *Tomorrow's Scholars* program has two deadlines this year. The first deadline has passed. The second one, the deadline for papers completed in the 1995-96 academic year, is January 31, 1996. There will be two program panels at the 1996 ILA convention, each representing one of these deadlines. Three copies of the completed study, with a separate title page including the student's name, institution, and address should be sent to Dr. Philip Emmert, School of Speech Communication, James Madison University, Harrisonburg, VA 22807.

For further information about this program, contact L. Todd Thomas, Dept. of Communication, North Carolina State University, Box 8104, Raleigh, NC 27695-2450, 919-515-2450.

## Four Weddings and No Funeral

by Sheila Bentley

The ILA Board met on September 29 & 30 at the Radisson Hotel in Sacramento, California, not only to conduct the business of ILA, but also to assess

the convention site amenities. As dedicated ILA public servants, we sampled gourmet food at The Firehouse in Old Town Sacramento and at Biba's in downtown Sacramento. We also ensured that the California wines are up to the discriminating taste of ILAers. However, in seeing that we attended to all of the pending ILA business, President Margaret Fitch-Hauser was such a demanding task master that we were unable to check out the shopping available. In fact, during the nine hour Board meeting, she allowed only two 5 minute breaks and a lunch break. (Perhaps there is some truth to the rumors her students spread!)

There were several notable events during the meeting. The Radisson grounds are so spectacular that many weddings are held near the scenic lake. We witnessed four weddings (and fortunately no funerals), and we helped Chuck Swanson celebrate a significant birthday.

Tommy Neuman is doing a fabulous job on the local arrangements. He has been busy planning and making arrangements down to the finest detail to ensure that the ILA members will feel welcome and that the 1996 Sacramento Convention will stand out as one of the most memorable and fun.

We look forward to seeing all of you in March!

## Top 10 Reasons to attend the '96 Convention

10. The ILA Regatta on Lake Nichols
9. The idyllic setting of the Radisson Hotel
8. The reception at the Railroad Museum
7. The incredible splendor of Lake Tahoe
6. Lots and lots of super shopping
5. Great ethnic and gourmet restaurants
4. The chance to meet new friends
3. To see old friends
2. Great program presentations
1. Superb fellowship with great listeners

## Opportunities of a Lifetime

(Continued from page 1)

This account provides an income to ILA to help meet the goals established by the organization.

In short, becoming a Lifetime Member enables you to join a prestigious group to save money, to help support the mission and goals of ILA, and to build a financially sound future for ILA.

For information on how to become a Lifetime Member, contact Kathy Thompson.

## Business Task Force: Where Are You?

You may have noticed that there are currently no members listed on the Business Task Force on the list of ILA Committees. The reason for this is not because no one is interested or that the business members are all "out to lunch." Rather, it is because the Business Task Force was inadvertently left off the ILA Committee sign-up sheet. Therefore, if you want to join those who have already signed up or are interested in helping to organize the Business Preconference, please let Margaret Fitch-Hauser know. We are already planning an exciting pre-conference titled "Resolving Conflicts – From Break Room to Board Room."

## New Members

John E. Dobogai Jr.  
2323 N. Mayfair Rd.  
Suite L30  
Wauwatosa, WI 53226  
(w) 414-771-6464  
(h) 414-529-3817

Linda Ewing  
161 Guadalupe  
Sonoma, CA 95476  
(w) 707-996-2811

David E. McEntyre  
c/o AllBody  
619 Fitch Ave  
Moor Park, CA 93021  
(w) 805-523-1991  
(h) 805-583-8029

Anne W. McKee  
2180 St. Francis Dr. #F244  
Ann Arbor, MI 48104  
(w) 313-487-2233  
(h) 313-973-7767

Nelya J. McKenzie  
Auburn University at Montgomery  
Dept. of Communication  
7300 University Dr.  
Montgomery, AL 36117  
(w) 334-244-3558

Robert Rollins MD  
2500 Wake Drive  
Raleigh, NC 27608  
(w) 919-781-3115

Suzanne Steinkamp  
43 Blue Ridge Dr.  
Vernon, CT 06066  
(w) 203-547-3011  
(h) 203-872-7304

Jean Stoddard  
1999 Clark Tunnel Rd  
Penryn, CA 95663  
(h) 916-663-1222

Dr. William J. Wallisch  
WJW & Associates  
919 Tari Dr.  
Colorado Springs, CO 80921  
(w) 719-488-8010  
(h) 719-488-8341

Myra L. Young  
Johnson County Community College  
12345 College Blvd.  
Overland Park, KS 66210  
(w) 913-469-8500 ext. 4128  
(h) 913-764-0169

## Address Changes

Sidney and Stephen Arndt  
7291 NE William Rd  
Indianola, WA 98342  
(h) 360-697-2620

Tommy Newman  
New fax number 916-966-0838

Dr. Jack G. Nichols  
HC 63  
Box 5021  
Carrabelle, FL 32322  
(h) 904-556-0405

New Chairperson, Sinclair Community  
College  
Lori Zakel, Chairperson  
Sinclair Community College  
444 W. Third St  
Dayton, OH 40402

Dr. Todd Thomas  
1305-3 Hardimont Rd.  
Raleigh, NC 27609  
(h) 919-954-9074  
(fax) 919-954-7115

Tom Wirkus  
1043 Lauderdale North  
Onalaska, WI 54650-3500  
(h) 608-781-8981

## Lifeblood of ILA: Membership

### Emergency Donors Needed - Will You Commit?

by Jay Brandon

Are you a believer in ILA membership? Obviously you are or you would not be a member. The issue then becomes what kind of member are you and what is it you want from your membership. Equally important, what is it you wish to contribute through your membership. Lets put it into perspective.

### You Receive from Membership

- Associate with people of common interest.
- Get valuable practical information from conventions and conferences.
- Get valuable practical information from ILA publications - *Listening Post*, and *International Journal of Listening*.
- Get valuable networking benefits.
- Listed in ILA membership directory.

### You Contribute to Membership

- Sign up new members of common interest.
- Contribute valuable practical information by presentations and papers at conferences and conventions.
- Contributes valuable practical information by submitting papers and articles to publications.
- Contribute through valuable networking.
- Listed in ILA membership directory.

Whichever way you choose to participate my opinion is this organization is at the crossroads of being a vibrant force or just another organization that listens to itself.

Membership growth can occur the hard way or the easy way. The hard way - members leave it to a few to publicize and generate new members. The easy

(Continued on page 6)

## News 'N Notes about ILA Members

On June 26, 27, 28, Edie Cole presented a seminar dealing with public speaking, voice and diction, oral interpretation of literature and listening at Tomsk State University in the Oblisk of Tomsk, Siberia in Russia. Edie says, "It was very exciting, wonderful feedback, and worth the 42 hour trip to get there when at the close of the seminar my students presented me with flowers, gifts, and Tatyana hugged me and said, 'Thank you, Edie, nobody ever talked to us about listening'."

Robert O. Weiss is the 1995 recipient of the Fred C. Tucker Distinguished Career Award at DePauw University. The award carries a \$10,000 cash stipend. Bob coordinates faculty development in the Speaking and Listening Across the Curriculum program at DePauw. His book on *Public Agreement* was published in May by the University Press of America.

Frank W. Freshour has recently assumed the position of Chair at the Childhood Education Department at the University of South Florida. Frank also has been certified as a mediator by the Florida Supreme Court and will be a featured speaker at the Florida Dispute Resolution Conference for mediators and arbitrators in August.

## Ralph Nichols Award: Important Information About New Deadline Dates

by Ethel Glenn

Each year the International Listening Association, in conjunction with the Institute for the Study of Intrapersonal Processes (ISIP), recognizes the outstanding research paper presented at the annual ILA Convention. The award honors founding member Ralph Nichols, whose research in the 1940s and 1950s provided the basis for much of the study of listening that has been done since.

Criteria for the award selection are as follows:

1. the recipient must be an ILA member
2. three copies of the completed theoretical or data based research paper must be submitted to the award coordinator by January 15 of the year of the award.
3. the top three papers will be presented alphabetically during a Ralph G. Nichols Award Program at the convention.
4. the Award Program will be sponsored jointly by the ILA Research Committee and ISIP
5. the award will be announced at the ILA convention banquet
6. the award chair will coordinate the award for two years
7. the winning paper should be submitted to the *International Journal of Listening*.

A cash prize of \$1,000 goes to the top paper, with prizes of \$100 and \$25 to the second and third place winners. The first prize is one of the largest cash amounts given in recognition of research by any of the communication related professional societies.

All presenters whose papers are theoretical or data based are urged to submit three copies for consideration. This year's coordinator is Ethel Glenn. Papers should be sent to her at:

1802 Walker Ave.  
Greensboro, NC 27403  
Telephone: 910-273-6772

The award coordinator and ISIP Board members, who read and evaluate the papers, have had difficulty in the past with the deadline. At one time, papers could be submitted on the first day of the convention. However, as the size of the membership and the number

of submissions grew, the readers experienced increased difficulty finding the time to read and evaluate all the papers during spare moments at the convention. In 1994, the decision was made to require advanced submission. ILA members somehow did not get the message (although it was printed in *The Listening Post!*), so in 1995, the committee again accepted papers at the convention.

Any of you who have ever tried to do a fair and honest reading of research papers know what a time consuming job it is. You should understand the need of the earlier submission date. We cannot expect committee members to miss meetings and sessions at the convention to sit in their hotel rooms reading papers.

The ISIP Board decided that for 1996, papers would be accepted until February 1. The January 15 deadline will be in force for 1997.

So, get ahead of the game - don't wait until the last minute. Finish those papers over the Christmas Holidays. And get them in the mail to Ethel in time to meet the deadline. Outstanding recognition, an almost guaranteed journal publication, and \$1,000 ought to be strong motivators to urge all of you to submit on time.

Don't forget - manuscripts in the mail by the last week in January in order to be given full consideration for the Ralph Nichols Award.

## Show Your Support for ILA

The International Listening Association is an important group not just to individuals, but to organizations as well. To show their support of ILA, many groups have begun to help sponsor ILA activities. For example, Spectra Incorporated Publishers is co-sponsoring an ILA mail out to California area educator and trainers. Leadership Communications, Bentley Consulting, Chuck Swanson, Kimberly Batty-Herbert, and Training for Results, are co-sponsoring the bumpersticker contest; John Dobogai, an accountant, not only contributed his services to ILA, but also became a member of ILA. Dobogai also agreed to continue to serve as a consultant to ILA regarding financial matters.

If you would like to help sponsor an event, there are numerous opportunities. For more information, contact Margaret Fitch-Hauser at 334-844-2766, 217 Tichenor Hall, Auburn University, Auburn AL, 36849.

## Phone Alert

It's not that we're not listening, it's just that we are not connecting. Some of you may be experiencing difficulty reaching folks in various areas of the country. These states may have recently established new area codes, which could make contacting someone in those states difficult. If you have tried to reach one of our members with a new area code and were unsuccessful, you might 1) e-mail or write them and 2) report your problem to your local phone company. In bureaucracy as in listening persistence pays off.

### Important Dates

**December 1, 1995** - Bumpersticker contest entries should be submitted to:  
Chuck Swanson  
Dept. of Comm. & Theatre  
Fairmont State College  
Fairmont, WV 36554

**January 31, 1996** - Tomorrow's Scholars Program Papers completed in the 1995-96 school year should be submitted to:  
Dr. Philip Emmert  
School of Speech Communications  
James Madison University  
Harrisonburg, VA 22807

**February 1, 1996** - Research Papers to be considered for the Ralph Nichols Award.

**March 14-16, 1996** - 17th Annual Convention to be held in Sacramento, CA.

**March 13-15, 1997** - 18th Annual Convention, to be held in Mobile, AL

**March 19-21, 1998** - 19th Annual Convention, to be held in Kansas City, MO

## The Professional and Personal Power of Membership

(Continued from pg. 1)

as well as the four regional conferences now offered.

By adding two more regional conferences this year, members have an extended opportunity to meet with people closer to home. Groshek finds the addition of the two regional conferences "a nice way to meet with people from your part of the country. It is also very affordable because there is still at least one located closer to your home. It saves on airfare, and I can still get in on the latest information."

Michael Murphy, currently a teacher in an inner city New Jersey high school as well as an instructor at Cornell University's Industrial Labor Relations Division, has presented at both the convention and regional conferences. "There is a comfortable mix at our meetings, just so many people from different backgrounds to ask advice of, talk to, relate to. And the members don't stand on ceremony. There are no Ph.D. titles needed, no backbiting. Members give and receive at this organization."

When talking about their membership as a whole, everyone feels that the greatest personal benefit is the reminder the ILA gives them to effectively listen in all aspects of their lives. The ILA has "transformed" Murphy's life. "I feel so much more connected with the people I love, the people I work with, and the ILA has given me a better sense of the quality of life." Groshek also experiences "a wealth of information which I can apply to my classes, and even my personal life. I use the *International Journal of Listening* as a tool for my classroom all the time. Instead of the scattered information on listening that is out there, the *Journal* provides concentrated information, filled with interesting articles and advice on effective listening."

With such dedicated members and so many outlets of communication in this organization, such as the *Listening Post*, the *Journal*, the Internet discussion program, Listen2, the 800 number, the 4 regional conferences, the convention, and the individual communication between members, ILA benefits are

available to everyone. Thomas doesn't "know another organization that is more generally rewarding. I've become an 'owner' in the organization, more than in any of the other academic organizations. If I don't go to any other convention, this is the one that I go to."

With access to all of the benefits as a member, take advantage of the resources available to you so you can apply the skills you learn from your benefits to help benefit others. Telling those interested in joining will also benefit your membership. Growth in our association means growth in the availability of information, accessibility, and networking for everyone involved.

Remember that membership expires October 1, 1995. Membership renewal letters were recently mailed. If you have not received yours or have questions on membership status, contact Kathy Thompson at 1-800-ILA-4505 or at the following address:

Kathy Thompson  
ILA Executive Director  
Professional Communication Dept.  
Alverno College  
P.O. Box 343922  
Milwaukee, WI 53234-3922

## Midwest Conference

The Second Midwest Conference of the ILA Listening Strategies: Intercultural-Gender Business-Instructional will be hosted by the Department of Communication Studies, Northwestern University. The date is October 28; the place, Northwestern University's Norris Center, Rm. 2G. Rates are \$20 for ILA members, \$15 for Students, \$25 for guests. For those who want to stay over, call 1-800-HOLIDAY for the Evanston, IL Holiday Inn.

### Program :

9:00-9:35 AM Bob Walker & Mike Purdy,  
Welcome and ILA Introduction

9:35-10:45 Dr. Pamela Cooper  
(Northwestern University),

Keynote speaker. "Chinese-American Communication"

She will discuss listening-speaking techniques and share her insights about diversity from her two years in Hong Kong. She feels intercultural communication is vital to our future.

11:00-11:45 Patricia Lynott (Loyola Chicago) & Pamela Kreiser (U. of Texas, Austin),  
"The Influence of Gender on the Process of Listening in the Workplace"

Lunch break (facilities within Norris Hall)

1:00-1:45 PM Jean Groshek (Alverno College) & Kathy Thompson (Alverno College),  
"Teaching and Assessing Listening"

1:45-2:30 Diana Schnapp (Johnson County CC/Baker University),  
"Listening to Grief and Loss"

2:30-3:30 Bill Gering (Gering Communications),  
"Listening Truly is Good Business"

3:30-4:00 ILA Midwest '96 Planning Meeting (and ILA Sacramento)

We will have a relaxed day with time for discussion after each set of talks.

Conference Coordinators:  
Michael Purdy, Registration  
Communications Programs, DLA  
Governors State University  
University Park, Illinois 60466  
W (708) 534-4081/(7895 fax) OR  
M-Purdy@bgu.edu

Bob Walker, local arrangements only  
Northeastern Illinois University  
Chicago, IL  
(708) 998-5259

## Lifeblood of ILA: Membership

(Continued from pg. 4)

way - every member commits to sign up at least one new member a year.

Want to feel good about yourself? Commit and follow through to sign up at least one member before the end of the year. You can dynamically change the momentum of your ILA. Let's all cease to "talk the walk" and all start to "walk the walk."

Step 1 = Call Kathy Thompson 414-382-6322 and have her mail brochure sign up forms to prospective members. Step 2 = Sign them up. Step 3 = Mentor them into the organization

Remember - Regret ways tons; Discipline ways ounces.

## Time for a New Editor

Serving as Editor of the *Listening Post* has been an interesting, enjoyable experience. The bad news for me is that my tenure is drawing to a close. The good news for you is that you now have the opportunity to expand your experiences with ILA and its members by serving as the next editor. Not only would you prepare four issues of the *Post* each year, but also you would serve as an ex officio member of the ILA Executive Board. And you would learn so much about our organization and its members during your three-year term as editor.

If you are interested in serving as the next editor of the *Listening Post*, please contact Margaret Fitch-Hauser at 334-844-2766, 217 Tichenor Hall, Auburn University, Auburn AL, 36849. The deadline for applications is February 1, 1996.

## Student Bumpersticker Contest

by Chuck Swanson

A bumpersticker contest for students studying listening is being held. As an in-class or outside project, as groups or as individuals, students are invited to create a bumpersticker. A bumpersticker can be no larger than 2 1/2" wide by 14" long. Bumperstickers may be one color for lettering with a different color for the paper or several colors of printing against one color paper; printing the bumperstickers will depend on the color of papers available at the printers. Lettering and/or figures should focus attention on listening, making an intense, thoughtful impact about listening on those seeing the sticker.

If a class project, or a number of individuals from one class, undertakes this contest, only the two or three most effective should be submitted.

ILA's public relations committee will judge the submissions and determine the top three bumperstickers. Winning stickers will be reproduced for distribution to the ILA membership and all other interested persons. Winning designers of the top three bumperstickers will win cash prizes of \$50 for first prize, \$30 for second prize, \$20 for third prize. Winners will also be announced at the convention in March. All submissions for

the ILA Bumpersticker Contest must be in possession of Dr. Charles H. Swanson, Department of Speech Communication and Theatre, Fairmont State College, Fairmont, West Virginia 26554, no later than December 1, 1995.

## 1996 Convention Progress Report

by Phil Emmert  
First Vice-President

This is just a short note to let everyone know what is happening relative to our convention in March. I have received proposals for programs, pre-conferences, and suggestions for programs as well. These materials make me think we are going to have a very interesting convention. I will be sending these proposals/papers to the program committee for evaluation between October 3 and October 15. It is my hope to have the evaluations back by the end of October. I will, at the same time, be contacting some of you regarding suggested programs to ask if you are willing to participate in a/some of the suggested programs. My hope is to notify most program participants of the acceptance of their papers/programs beginning in late October through the middle of November. If you have a special need for early notification of program/paper acceptance because of travel procedures at your school, business, or other institution, fax a request to me for early notification at (540) 568-6059, e-mail me at EMMERTPX@VAX1.ACS.JMU.EDU, or write me at the following address: Philip Emmert, School of Speech Com-

munications, James Madison University, Harrisonburg, VA 22807. I will do my best to get notifications to you as quickly as possible.

## ILA Executive Director Takes Listening On-Air

by Amy Marcinisk  
Student Writer

New ILA Executive Director Kathy Thompson was invited for an interview on August 28th by Jean Feraca, a popular morning talk show host on WHAD, Wisconsin Public Radio-90.7 FM, to discuss the International Listening Association.

The program was called "The Art of Listening" and dealt with the definition of effective listening, the barriers to becoming an artful listener, and ways to improve listening habits.

Callers from all over Wisconsin joined Thompson and Feraca to discuss some of the personal listening problems and issues in their lives.

A mother wanted to learn how to listen rather than give advice to her daughter, a counselor for the Teen Suicide Prevention Program shared her thoughts on parental listening and how it affects suicidal tendencies, a philosophy teacher from the University of Wisconsin discussed how she integrates listening in philosophical dialogues, and a human resource manager discussed the vital importance of employers listening to employees.

Besides the calls during the talk show, 12 people contacted the ILA through our 800 number requesting information after hearing the show.

Open your heart...

Open your mind...

Open your world...

**LISTEN**

*ILA T-shirts, posters and notecards are still on sale.  
There is a limited supply, so order now!*

T-shirts are \$18 (Sizes: L and XL)

Posters are \$10

Notecards are 3 for \$6.25, 6 for \$11.25, or 12 for \$19.25

\* All prices include postage and handling.

Send order information to:

Kathy Thompson, ILA Exec. Director, Professional Communication Dept.,  
Alverno College, P.O. Box 353922, Milwaukee, WI 5324-3922  
414-382-6322, fax 414-382-6354

## **Wanted: Writers in a Pool**

Individuals interested in writing articles about listening and the ILA for business and trade journals should contact Chuck Swanson. The ILA Public Relations Committee will be targeting specific groups and their journals/magazines with articles about listening (and mentioning ILA with the ILA Executive Director and her address). Such articles need to apply to the specific interests and needs of such a group, and be written in a style appropriate to their journal/magazine. Study example articles from the journal/magazine you are targeting to determine their style. Focus such articles on activities and results, and avoid sounding like a teacher or an academic. If you are interested and willing to undertake writing such an article, contact Charles Swanson, Dept. of Speech and Communication and Theatre, Fairmont, WV 26554.

## **Swap Shop**

Bob Bohlken and Kimberly Batty-Herbert are once again collecting swap shop items. The Little Rock swap shop and booklets received such positive appraisals that Bob and Kimberly are trying it again. However, they cannot succeed without your help. If you have an activity or exercise you would like to share with your ILA friends, get it down on paper. Be sure to include the title, objectives, time needed, no. of participants and procedure.

Submissions will be compiled into a booklet, which will be available free of charge to contributors.

Send your activities/exercises to either Kimberly Batty-Herbert, Clovis Community College, 417 Schepps Blvd., Clovis, NM 88101 or Bob Bohlken, NW Missouri State University, Wills Hall, Maryville, OH 64468.

## **Nominating Committee Procedures Change**

During our annual business meeting last year we voted to change the procedure for selecting members of the nominating committee. The procedure, described on page 59-60 of your Mem-

bership Directory, now includes nominating a member at the convention. To help facilitate this process, please turn in the name of those you wish to nominate at the registration desk during the convention. We will take nominations throughout the day Thursday, and will vote on the selected individual on Friday.

## **NY Regional ILA**

The New York Regional ILA will host its annual Fall Listening Seminar October 28, 1995. The meeting will be held at Montclair State University in Upper Montclair, NJ from 9:30 am until 3:00 pm. Speakers include Hannah Merker, author of *Listening...* Her presentation, entitled "Listening in the Silent World," will discuss listening from the perspective of the hearing impaired.

Wayne Bond will also be presenting at the seminar. A former president of the ILA, Wayne will discuss empathic listening strategies. His presentation will explore empathic and sympathetic listening and will include activities and strategies for teaching and training listening.

For more information, contact Wayne Bond at 201-655-5214, Dept. of Speech/Theatre, Montclair State University, Upper Montclair, NJ 07043.

## **Teaching Position Available**

The University of Minnesota, Morris is announcing the opening of two tenure-track positions, to begin September 16, 1996. The Ph.D. is preferred. The instructional emphasis for Position A is in electronic communications; for Position B, communications. The deadline for applications is October 27, 1995. For further information contact C.F. Farrell, Jr., Department of the Humanities, University of Minnesota - Morris, Morris, MN 56267. The University of Minnesota is an equal opportunity educator and employer.

...

*Don't forget to send in your  
Membership Renewal Form.  
Remember, the membership year is from  
October 1- September 30.*

...

## **Reflections on Listening**

I often ponder over the nature of human sincerity, true transparency..... it is a rare and difficult thing; and how much it depends on the person who is listening to us! There are those who pull down the barriers and make the way smooth; there are those who force the doors and enter our territory like invaders; there are those who barricade us in, shut us in upon ourselves, dig ditches and throw up walls around us; there are those who set us out of tune and listen only to our false notes, there are those for whom we always remain strangers, speaking an unknown tongue. And when it's our turn to listen, which of these are we?

— John Powell

## **Sad news**

ILA charter member Virginia H. Dechaine died in her sleep August 2, 1995. She was in Los Angeles at the time of her death, visiting her daughter. See the January issue of the *Listening Post* for more details of Dechaine's contributions to listening and the ILA.



### **Important Addresses**

**International Office:** Kathy Thompson  
ILA Executive Director  
Professional Communication Dept.  
Alverno College  
P.O. Box 343922  
Milwaukee, WI 53234-3922

**The Listening Post:** Lisa Vickers, Editor  
Dept. of Communication and Theatre  
University of North Alabama  
Box 5189  
Florence, AL 35632

**International Journal of Listening:** Charles Roberts, Editor  
Dept. of Communication  
Box 70667  
East Tennessee State University  
Johnson City, TN 37614-0067